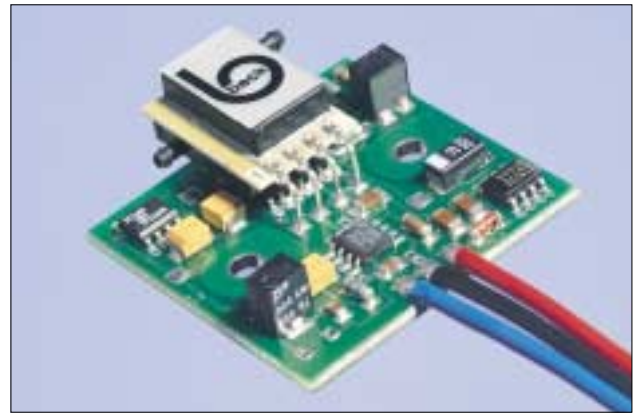


Beck.

The electronic pressure transmitters.



Pressure transmitters



The pressure transmitters work on the basis of a piezoresistive pressure sensor and are suitable for monitoring gaseous, non-aggressive media. All pressure transmitters are equipped with two pressure connections to measure differential pressure, positive pressure or vacuum.

Applications

- Monitoring air filters and ventilators
- Level monitoring of fluids
- Monitoring air flows
- Pressure monitoring in clean rooms

Pressure transducer

| Pressure ranges | Overload capacity | Linearity and hysteresis error (maximum, in % of FS) | Temperature error in the range 0–50° C (in % of FS) | Long-term stability (typical, in % of FS/year) | Repetition accuracy (in % of FS) | Response time |
|-----------------|-------------------|--|---|--|----------------------------------|---------------|
| 0... 250 Pa | 2.5 kPa | + – 1.0 | + – 5.0 | + – 0.5 | + – 0.2 | 1 ms |
| 0... 500 Pa | 2.5 kPa | + – 1.0 | + – 5.0 | + – 0.5 | + – 0.2 | 1 ms |
| 0... 1 kPa | 2.5 kPa | + – 1.0 | + – 2.5 | + – 0.5 | + – 0.2 | 1 ms |
| 0... 2.5 kPa | 30 kPa | + – 1.0 | + – 1.0 | + – 0.1 | + – 0.5 | 1 ms |
| 0... 5 kPa | 75 kPa | + – 1.0 | + – 1.0 | + – 0.1 | + – 0.5 | 1 ms |
| 0... 10 kPa | 100 kPa | + – 1.0 | + – 1.0 | + – 0.1 | + – 0.5 | 1 ms |
| 0... 25 kPa | 100 kPa | + – 1.0 | + – 1.0 | + – 0.1 | + – 0.5 | 1 ms |
| 0... 50 kPa | 100 kPa | + – 1.0 | + – 1.0 | + – 0.1 | + – 0.5 | 1 ms |
| 0... 100 kPa | 300 kPa | + – 1.0 | + – 1.0 | + – 0.1 | + – 0.5 | 1 ms |
| 0... 250 kPa | 600 kPa | + – 1.0 | + – 1.0 | + – 0.1 | + – 0.5 | 1 ms |

Measuring principle

Piezoresistive pressure transducer, suitable for air and non-aggressive gases.

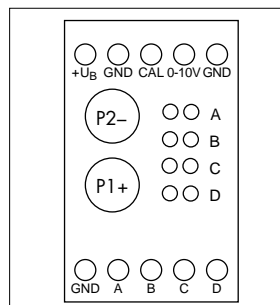
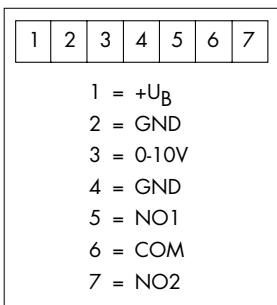
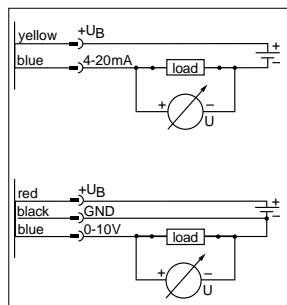
Temperature ranges

Compensated temperature range: 0...+ 50° C

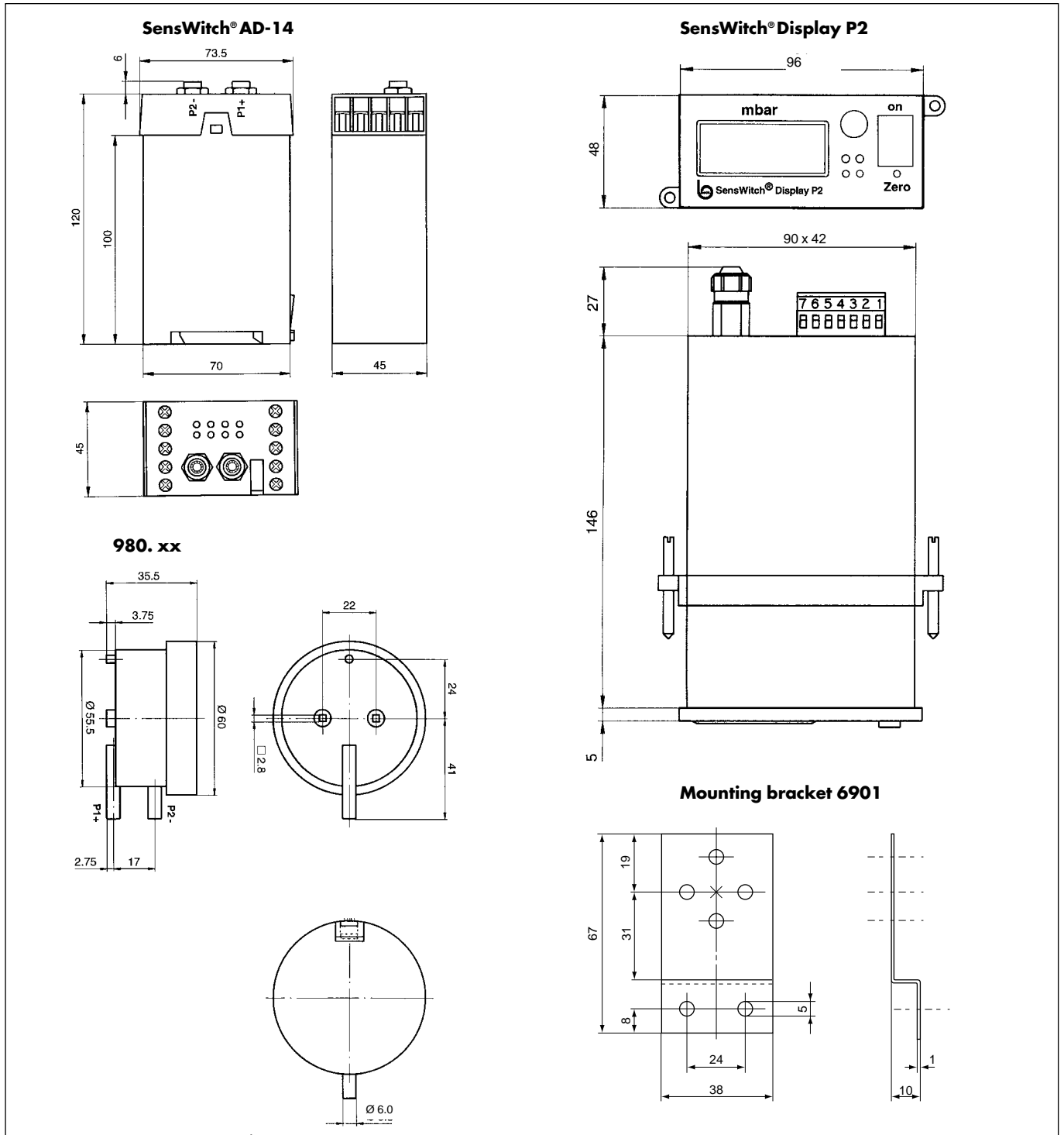
Operating range and storage range: 0...+ 70° C from 250 Pa to 1 kPa; – 25... + 85° C from 2.5 to 250 kPa.



| | Pressure transmitter 980. xx | Digital manometer SensWitch® Display P2 | Pressure transmitter SensWitch® AD-14 |
|-----------------------|---|--|---|
| Pressure connection | 6 mm hose connector | 2 quick-release connections 4 or 6 mm on the back of the unit; alternatively 1 front pressure connection | 2 quick-release couplers 4 mm on the front of the unit |
| Supply voltage | 15...30 VDC with reverse voltage protection | 15...30 VDC with reverse voltage protection or 230 VAC | 15...30 VDC with reverse voltage protection |
| Output signals | 0...10 V short-circuit-proof 4...20 mA (two-wire system) | 0...10 V short-circuit-proof 4...20 mA (two-wire system) | 0...10 V short-circuit-proof 4...20 mA (two-wire system) |
| Switching outputs | on request | 2 (optional), load capacity 1A/230 VAC | 4, load capacity 100 mA/24 VDC per channel, open collector |
| Display | none | 3.5 digits, 7-segment LCD, figure height 12.7 mm, display of the sign, contrast ratio 1:8 | none |
| Electrical connection | connecting lead or plug connection | 7-pin connector, 16-pin connector for additional two-wire system | Screw connections for conductor up to maximum 2.5 mm ² |
| Mounting | 2 serrated screws, mounting bracket optional | Switchboard device according to DIN 43700 | Top-hat rail mounting according to DIN EN 50022-35 |
| Weight | 55 g | 500 g | 300 g |
| Protection category | IP 50 (optional IP 65) | IP 20 | IP 20 |



Pressure transmitters



Beck.

The differential pressure transmitter for air



Differential pressure transmitter 984



General description

The differential pressure transmitters of the 984 series are used for measuring differential pressure, positive pressure and vacuum.

They offer 2 pressure ranges which can alternatively be selected by a jumper.

Applications

Monitoring gaseous, non-aggressive media. Possible areas of application are:

- air-conditioning and clean rooms
- building automation
- environmental protection
- fan and blower control
- valve and flap control
- filter and blower monitoring
- fluid and level monitoring
- control of air flows

Measuring method

Piezoresistive pressure transducer

Selection of pressure range

To adapt best for the application the transmitter can be selected between two adjoining pressure ranges. Factory setting is for the most sensitive range, by opening of a jumpered bridge the less sensitive range is activated.

Adjustable response time

The response time of the output signal can be selected by a jumpered bridge. Factory setting is for a slow response time, which dampens short pressure peaks. To work with a fast response time this bridge needs to be replaced.

Mounting position

They can be mounted in any position. Due to the self-compensating piezoresistive pressure transducer any possible mounting error is eliminated.

Switching output (not for output 4 ... 20 mA, 2-wire)

The differential pressure transmitter contains apart from the analog voltage output an additional switching output.

Technical data

| | |
|--|--|
| Pressure medium | Air and non-aggressive gases |
| Linearity and hysteresis error | $\leq \pm 1 \%$ of FS |
| Working temperature | 0...50 °C |
| Storage temperature | -10 ... 70 °C |
| Long-term stability, typ. | $\leq \pm 0.5 \%$ to 2.5% of FS/year, depending on pressure range |
| Repetition accuracy | $\leq \pm 0.2 \%$ of FS |
| Position dependence | $\leq \pm 0.02 \%$ of FS/g |
| Humidity | 0 ... 95 % rel, non-condensing |
| Response time, selectable | 100 ms or 1s |
| Process connection | 6 mm hose pipe |
| Electrical connection | Screw terminal block for wire up to 1.5 mm ² |
| Mounting | Screw mounting with serrated screws |
| Special features | red LED-display, optional |
| Housing material | Housing with process connection P2 made of ABS, mounting part with process connection P1 made of POM |
| Housing dimensions | approx. Ø 85 x 58 mm |
| Weight | approx. 130 g |
| Protection category according to EN60529 | IP 00 without protection cap IP 54 with protection cap (delivery condition) |
| Cable conduit for protection cap | M20 x 1.5 made of Polyamide |
| Standards / Conformance | EN60770, EN61326 |

Pressure ranges

| Type | Pressure range 1 | Pressure range 2 | Overload capacity | Bursting pressure | Temperature error |
|---------|------------------|------------------|-------------------|-------------------|-------------------------|
| 984.323 | 0 ... 100 Pa | 0 ... 250 Pa | 20 kPa | 40 kPa | $\leq \pm 5 \%$ v. EW |
| 984.333 | 0 ... 250 Pa | 0 ... 500 Pa | 20 kPa | 40 kPa | $\leq \pm 5 \%$ v. EW |
| 984.343 | 0 ... 500 Pa | 0 ... 1,000 Pa | 20 kPa | 40 kPa | $\leq \pm 2.5 \%$ v. EW |
| 984.353 | 0 ... 1 kPa | 0 ... 2.5 kPa | 40 kPa | 70 kPa | $\leq \pm 1 \%$ v. EW |
| 984.373 | 0 ... 5 kPa | 0 ... 10 kPa | 60 kPa | 120 kPa | $\leq \pm 1 \%$ v. EW |
| 984.393 | 0 ... 25 kPa | 0 ... 50 kPa | 300 kPa | 500 kPa | $\leq \pm 1 \%$ v. EW |
| 984.3B3 | 0 ... 100 kPa | 0 ... 250 kPa | 1.2 MPa | 2 MPa | $\leq \pm 1 \%$ v. EW |

Order matrix

| | | | | | | | |
|----------------------------------|---|----------------------------|--------------|----------|---|---|---|
| selectable | 0 ... 100 Pa (1.0 mbar) | 0 ... 250 Pa (2.5 mbar) | 984.3 | 2 | | | |
| pressure ranges | 0 ... 250 Pa (2.5 mbar) | 0 ... 500 Pa (5.0 mbar) | | 3 | | | |
| | 0 ... 500 Pa (5.0 mbar) | 0 ... 1,000 Pa (10 mbar) | | 4 | | | |
| | 0 ... 1 kPa (10 mbar) | 0 ... 2.5 kPa (25 mbar) | | 5 | | | |
| | 0 ... 5 kPa (50 mbar) | 0 ... 10 kPa (100 mbar) | | 7 | | | |
| | 0 ... 25 kPa (250 mbar) | 0 ... 50 kPa (500 mbar) | | 9 | | | |
| | 0 ... 100 kPa (1,000 mbar) | 0 ... 250 kPa (2,500 mbar) | | B | | | |
| Pressure unit | Pascal | | | | 3 | | |
| Output signal and supply voltage | 0 ... 10 Volt, 3-wire, 24 VAC / VDC, with switching output | | | | | 1 | |
| | 4 ... 20 mA, 2-wire, 24 VDC, without switching output | | | | | 2 | |
| | 4 ... 20 mA, 3-wire, 24 VAC / VDC, with switching output | | | | | 3 | |
| | 0 ... 10 Volt, 3-wire, 24 VAC / VDC, without switching output | | | | | 7 | |
| | 4 ... 20 mA, 3-wire, 24 VAC / VDC, without switching output | | | | | D | |
| Display | none | | | | | | 0 |
| | with LED-Display, 3.5 digits (not for output 4 ... 20 mA, 2-wire) | | | | | | 1 |
| Electrical connection | screw terminal block | | | | | | 4 |

Accessories

| | |
|---|------------------|
| Metal mounting bracket S-shaped | Article No. 6402 |
| Metal mounting bracket L-shaped | Article No. 6401 |
| Snap-on plastic bracket S-shaped | Article No. 6482 |
| Snap-on plastic bracket L-shaped | Article No. 6481 |
| Climaset® consisting of 2m PVC hose and 2 plastic tubes | Article No. 6555 |
| Climaset® consisting of 2m Silicone hose and 2 plastic tubes | Article No. 6557 |
| Climaset® consisting of 2m PVC hose and 2 angled metal pipes | Article No. 6550 |
| Climaset® consisting of 2m Silicone hose and 2 angled metal pipes | Article No. 6556 |
| Plastic tube for Climaset® 6555 | Article No. 6551 |
| Angled metal pipe for Climaset® 6550 | Article No. 6552 |
| Rubber grommet for Climaset® 6550 | Article No. 6553 |
| Roll with 100 m PVC hose | Article No. 6424 |
| PG-11 cable conduit including sealing and counter screw | Article No. 6358 |
| M20x1.5 cable conduit including sealing and counter screw | Article No. 6568 |
| NPT1/2" cable conduit without counter parts | Article No. 6561 |
| Card box for single packing | Article No. 6426 |

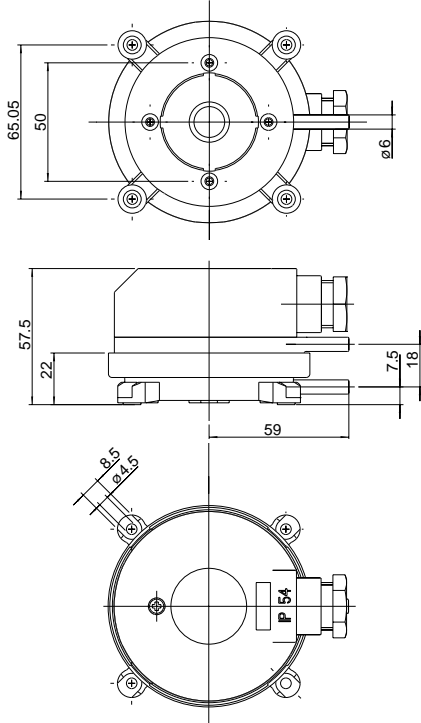
Electrical connections

| Type | 984.3x37... without switching output | 984.3x32... without switching output | 984.3x3D... without switching output |
|--|--|--|--|
| Output signal shortcircuit-proof to ground | 0 ... 10 V, 3-wire, | 4 ... 20 mA, 2-wire, | 4 ... 20 mA, 3-wire, |
| Supply voltage | 18 ... 30 VAC and 16 ... 32 VDC | 15 ... 30 VDC | 18 ... 30 VAC and 16 ... 32 VDC |
| Supply current, max. | 30 mA for AC 20 mA for DC | 30 mA | 30 mA |
| Offset adjustment | ≤ ± 50 mV | ≤ ± 80 µA | ≤ ± 80 µA |
| Span adjustment | ≤ ± 50 mV | ≤ ± 80 µA | ≤ ± 80 µA |
| Output current, max. | 10 mA | 30 mA | 30 mA |
| Maximum Load | – | ≤ 470 Ω | ≤ 470 Ω |

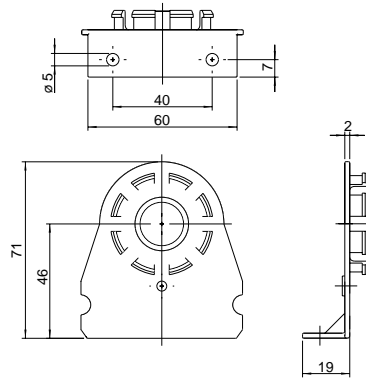
| Type | 984.3x31... with switching output | | 984.3x33... with switching output |
|------------------|--|---|--|
| Switching output | Open-collector, npn, SPST, 100 mA max. ≤ 35 VDC, adjustable | – | Open-collector, npn, SPST, 100 mA max. ≤ 35 VDC, adjustable |
| Hysteresis | 5 ... 10 % v. FS | – | 5 ... 10 % v. FS |
| Response time | > 100 ms | – | > 100 ms |

Differential pressure transmitter 984

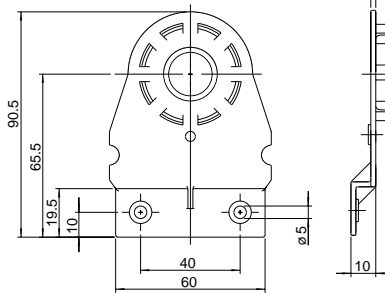
984



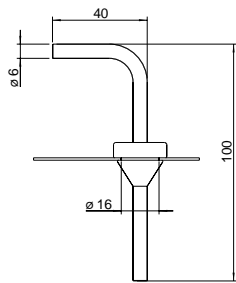
Mounting bracket 6481



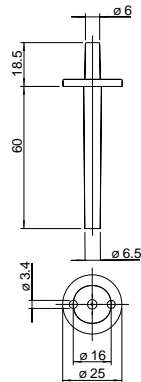
Mounting bracket 6482



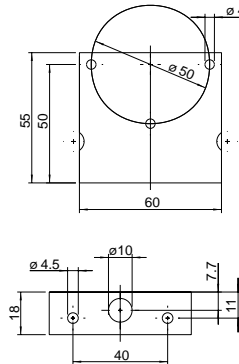
Climaset® 6550/6556



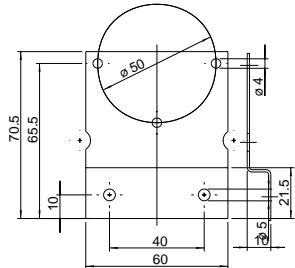
Climaset® 6555/6557



Mounting bracket 6401

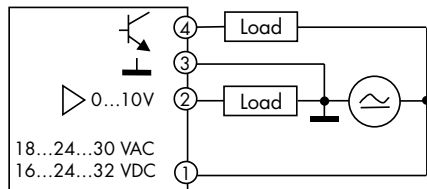


Mounting bracket 6402



Connection assignment 984.3x3104 and ...704

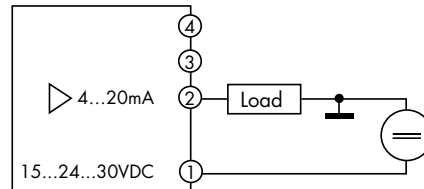
Pressure Transmitter



| | |
|---|-----------------------|
| 4 | Switching output, npn |
| 3 | (GO) GND |
| 2 | (Y) Out 0 ... 10 V |
| 1 | (G) In 24 VAC / VDC |

984.3x3204

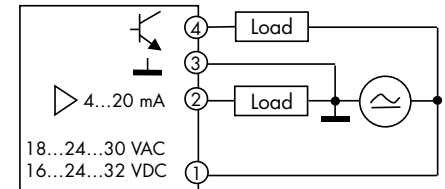
Pressure Transmitter



| | | |
|---|-----|-----------------|
| 4 | NC | do not use |
| 3 | NC | do not use |
| 2 | (Y) | Out 4 ... 20 mA |
| 1 | (G) | In 24 VDC |

984.3x3304 and ...D04

Pressure Transmitter



| | |
|---|-----------------------|
| 4 | Switching output, npn |
| 3 | (GO) GND |
| 2 | (Y) Out 4 ... 20 mA |
| 1 | (G) In 24 VAC / VDC |



Beck GmbH
Druckkontrolltechnik
P.O. Box 11 31
D-71140 Steinenbronn
Telephone +49 (71 57) 52 87-0
Telefax +49 (71 57) 52 87-83
e-mail sales@beck-sensors.com
http://www.beck-sensors.com

Beck.

The differential pressure transmitter for air IP 65



Differential pressure transmitter 986



General description

The differential pressure transmitters of the 986 series are used for measuring differential pressure, positive pressure and vacuum.

They offer 2 pressure ranges which can alternatively be selected by a jumper. The IP65 aluminium die cast housing protects the pressure transducer even in difficult environments.

Applications

Monitoring gaseous, non-aggressive media. Possible areas of application are:

- air-conditioning and clean rooms
- building automation
- environmental protection
- fan and blower control
- valve and flap control
- filter and blower monitoring
- fluid and level monitoring
- control of air flows

Measuring method

Piezoresistive pressure transducer

Selection of pressure range

To adapt best for the application the transmitter can be selected between two adjoining pressure ranges. Factory setting is for the most sensitive range, by opening of a jumpered bridge the less sensitive range is activated.

Adjustable response time

The response time of the output signal can be selected by a jumpered bridge. Factory setting is for a slow response time, which dampens short pressure peaks. To work with a fast response time this bridge needs to be replaced.

Mounting position

They can be mounted in any position. Due to the self-compensating piezoresistive pressure transducer any possible mounting error is eliminated.

Switching output (not for output 4 ... 20 mA, 2-wire)

The differential pressure transmitter has an optional separate switching output.

The switching output is designed as an open-collector transistor output in NPN technology. The permissible current is 100 mA, whereby the voltage may not exceed 35 VDC. The output is protected against short-circuit by a self-resetable fuse.

Technical data

| | |
|--------------------------------|---|
| Pressure medium | Air and non-aggressive gases |
| Linearity and hysteresis error | $\leq \pm 1 \%$ of FS |
| Working temperature | 0...50 °C |
| Storage temperature | -10 ... 70 °C |
| Long-term stability, typ. | $\leq \pm 0.5 \%$ to 2.5% of FS/year, depending on pressure range |
| Repetition accuracy | $\leq \pm 0.2 \%$ of FS |
| Position dependence | $\leq \pm 0.02 \%$ of FS/g |
| Humidity | 0 ... 95 % rel, non-condensing |
| Response time, selectable | 100 ms or 1 s |
| Process connection | 4 mm hose pipe |
| Electrical connection | Screw terminal block for wire up to 1.5 mm ² |
| Cable conduit | M12 Polyamide |
| Mounting | Screw mounting with serrated screws |
| Housing material | Aluminium die cast |
| Housing dimensions | 64 x 58 x 34 mm |
| Weight | approx. 170 g |
| Protection category to EN60529 | IP 65 |
| Standards / Conformance | EN60770, EN61326 |

Pressure ranges

| Type | Pressure range 1 | Pressure range 2 | Overload capacity | Bursting pressure | Temperature error |
|---------|------------------|------------------|-------------------|-------------------|-------------------------|
| 986.323 | 0 ... 100 Pa | 0 ... 250 Pa | 20 kPa | 40 kPa | $\leq \pm 5 \%$ v. EW |
| 986.333 | 0 ... 250 Pa | 0 ... 500 Pa | 20 kPa | 40 kPa | $\leq \pm 5 \%$ v. EW |
| 986.343 | 0 ... 500 Pa | 0 ... 1,000 Pa | 20 kPa | 40 kPa | $\leq \pm 2.5 \%$ v. EW |
| 986.353 | 0 ... 1 kPa | 0 ... 2.5 kPa | 40 kPa | 70 kPa | $\leq \pm 1 \%$ v. EW |
| 986.373 | 0 ... 5 kPa | 0 ... 10 kPa | 60 kPa | 120 kPa | $\leq \pm 1 \%$ v. EW |
| 986.393 | 0 ... 25 kPa | 0 ... 50 kPa | 300 kPa | 500 kPa | $\leq \pm 1 \%$ v. EW |
| 986.3B3 | 0 ... 100 kPa | 0 ... 250 kPa | 1.2 MPa | 2 MPa | $\leq \pm 1 \%$ v. EW |

Order matrix

| | | | | | | | |
|----------------------------------|--|----------------------------|--------------|----------|---|---|---|
| selectable | 0 ... 100 Pa (1.0 mbar) | 0 ... 250 Pa (2.5 mbar) | 986.3 | 2 | | | |
| pressure ranges | 0 ... 250 Pa (2.5 mbar) | 0 ... 500 Pa (5.0 mbar) | | 3 | | | |
| | 0 ... 500 Pa (5.0 mbar) | 0 ... 1,000 Pa (10 mbar) | | 4 | | | |
| | 0 ... 1 kPa (10 mbar) | 0 ... 2.5 kPa (25 mbar) | | 5 | | | |
| | 0 ... 5 kPa (50 mbar) | 0 ... 10 kPa (100 mbar) | | 7 | | | |
| | 0 ... 25 kPa (250 mbar) | 0 ... 50 kPa (500 mbar) | | 9 | | | |
| | 0 ... 100 kPa (1,000 mbar) | 0 ... 250 kPa (2,500 mbar) | | B | | | |
| Pressure unit | Pascal | | | | 3 | | |
| Output signal and supply voltage | 0... 10 Volt, 3-wire, 24 VAC / VDC, with switching output | | | | | 1 | |
| | 4... 20 mA, 2-wire, 24 VDC, without switching output | | | | | 2 | |
| | 4... 20 mA, 3-wire, 24 VAC / VDC, with switching output | | | | | 3 | |
| | 0... 10 Volt, 3-wire, 24 VAC / VDC, without switching output | | | | | 7 | |
| | 4... 20 mA, 3-wire, 24 VAC / VDC, without switching output | | | | | D | |
| Display version | not available | | | | | | 0 |
| Electrical connection | screw terminal block | | | | | | 4 |

Accessories

| | |
|---|------------------|
| Climaset® consisting of 2m PVC hose and 2 plastic tubes | Article No. 6555 |
| Climaset® consisting of 2m Silicone hose and 2 plastic tubes | Article No. 6557 |
| Climaset® consisting of 2m PVC hose and 2 angled metal pipes | Article No. 6550 |
| Climaset® consisting of 2m Silicone hose and 2 angled metal pipes | Article No. 6556 |
| Plastic tube for Climaset® 6555 | Article No. 6551 |
| Angled metal pipe for Climaset® 6550 | Article No. 6552 |
| Rubber grommet for Climaset® 6550 | Article No. 6553 |
| Roll with 100 m PVC hose | Article No. 6424 |

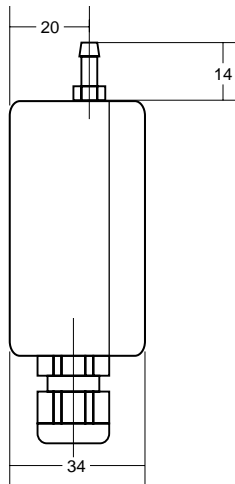
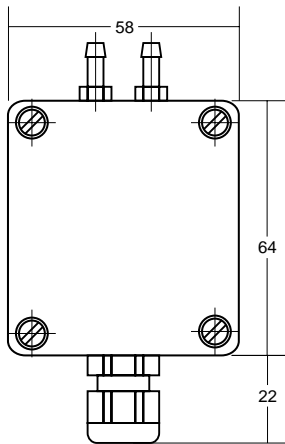
Electrical connections

| Type | 986.3x37... without switching output | 986.3x32... without switching output | 986.3x3D... without switching output |
|--|--|--|--|
| Output signal shortcircuit-proof to ground | 0 ... 10 V, 3-wire, | 4 ... 20 mA, 2-wire, | 4 ... 20 mA, 3-wire, |
| Supply voltage | 18 ... 30 VAC and 16 ... 32 VDC | 15 ... 30 VDC | 18 ... 30 VAC and 16 ... 32 VDC |
| Supply current, max. | 30 mA for AC 20 mA for DC | 30 mA | 30 mA |
| Offset adjustment | ≤ ± 50 mV | ≤ ± 80 μA | ≤ ± 80 μA |
| Span adjustment | ≤ ± 50 mV | ≤ ± 80 μA | ≤ ± 80 μA |
| Output current, max. | 10 mA | 30 mA | 30 mA |
| Maximum Load | – | ≤ 470 Ω | ≤ 470 Ω |

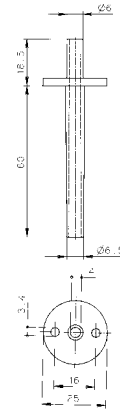
| Type | 986.3x31... with switching output | 986.3x33... with switching output |
|------------------|--|--|
| Switching output | Open-collector, npn, SPST, 100 mA max. ≤ 35 VDC, adjustable | Open-collector, npn, SPST, 100 mA max. ≤ 35 VDC, adjustable |
| Hysteresis | 5 ... 10 % v. FS | 5 ... 10 % v. FS |
| Response time | > 100 ms | > 100 ms |

Differential pressure transmitter 986

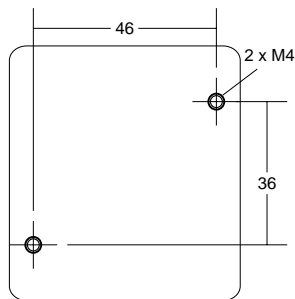
986



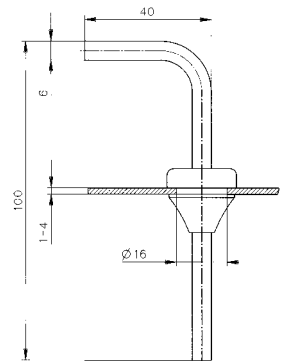
Climaset®
6555/6557



Drilling pattern



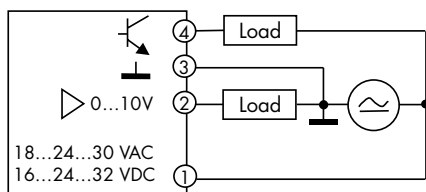
Climaset®
6550/6556



Connection assignment

986.3x3104 and ...704

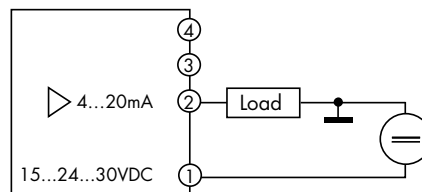
Pressure Transmitter



| | |
|---|-----------------------|
| 4 | Switching output, npn |
| 3 | (GO) GND |
| 2 | (Y) Out 0 ... 10 V |
| 1 | (G) In 24 VAC / VDC |

986.3x3204

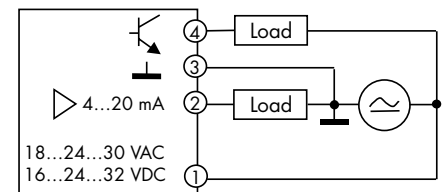
Pressure Transmitter



| | | |
|---|-----|-----------------|
| 4 | NC | do not use |
| 3 | NC | do not use |
| 2 | (Y) | Out 4 ... 20 mA |
| 1 | (G) | In 24 VDC |

986.3x3304 and ...D04

Pressure Transmitter



| | |
|---|-----------------------|
| 4 | Switching output, npn |
| 3 | (GO) GND |
| 2 | (Y) Out 4 ... 20 mA |
| 1 | (G) In 24 VAC / VDC |



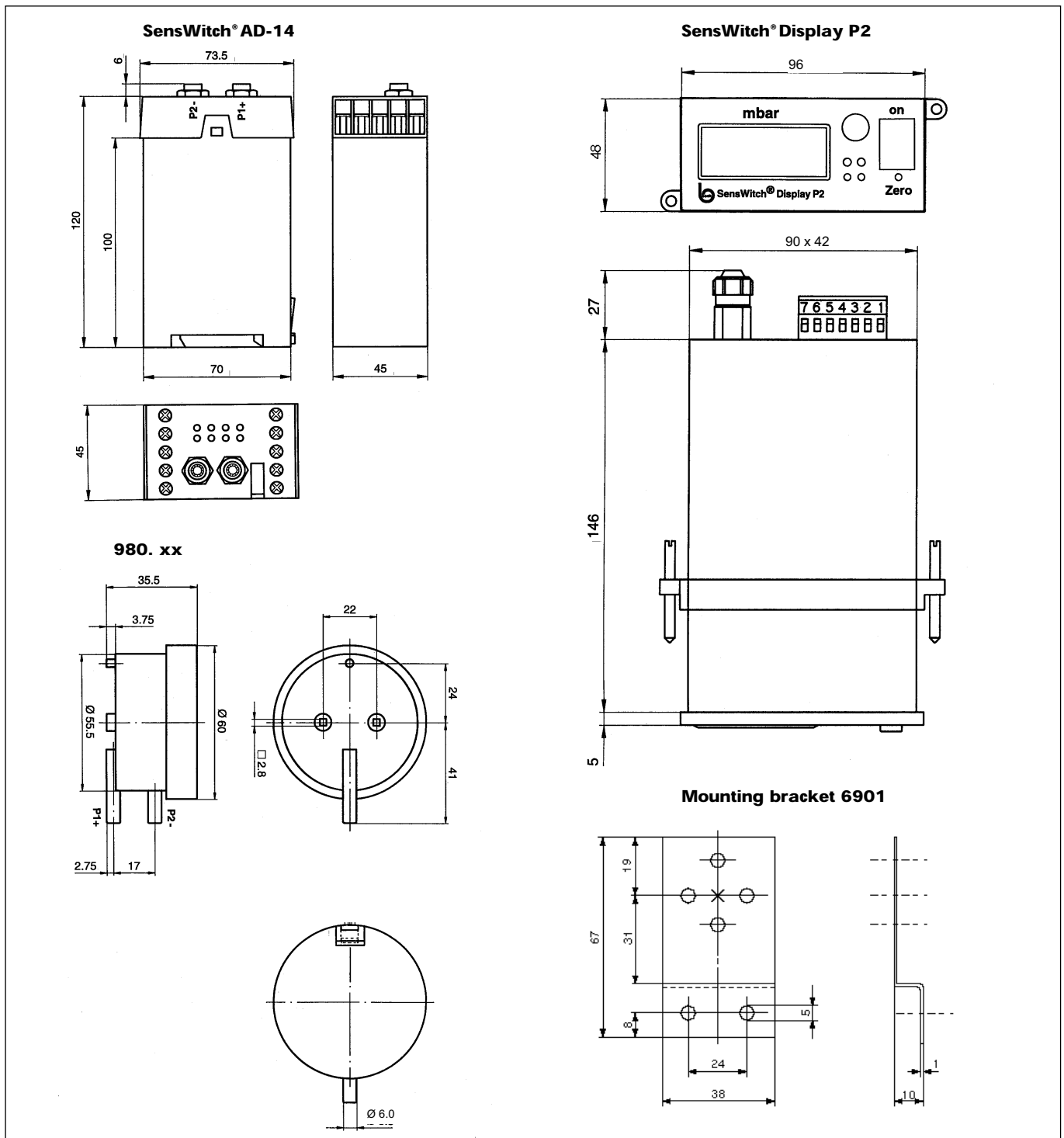
Beck GmbH
Druckkontrolltechnik
P.O. Box 11 31
D-71140 Steinenbronn
Telephone +49 (71 57) 52 87-0
Telefax +49 (71 57) 52 87-83
e-mail sales@beck-sensors.com
http://www.beck-sensors.com

Beck.

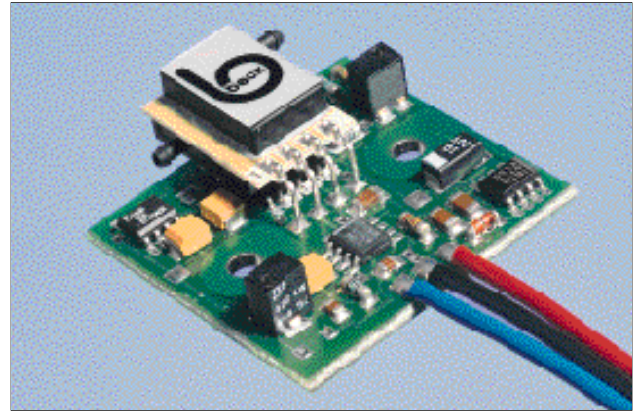
The electronic pressure transmitters.



Pressure transmitters



Pressure transmitters



The pressure transmitters work on the basis of a piezoresistive pressure sensor and are suitable for monitoring gaseous, non-aggressive media. All pressure transmitters are equipped with two pressure connections to measure differential pressure, positive pressure or vacuum.

Applications

- Monitoring air filters and ventilators
- Level monitoring of fluids
- Monitoring air flows
- Pressure monitoring in clean rooms

Pressure transducer

| Pressure ranges | Overload capacity | Linearity and hysteresis error (maximum, in % of FS) | Temperature error in the range 0–50° C (in % of FS) | Long-term stability (typical, in % of FS/year) | Repetition accuracy (in % of FS) | Response time |
|-----------------|-------------------|--|---|--|----------------------------------|---------------|
| 0... 250 Pa | 2.5 kPa | + – 1.0 | + – 5.0 | + – 0.5 | + – 0.2 | 1 ms |
| 0... 500 Pa | 2.5 kPa | + – 1.0 | + – 5.0 | + – 0.5 | + – 0.2 | 1 ms |
| 0... 1 kPa | 2.5 kPa | + – 1.0 | + – 2.5 | + – 0.5 | + – 0.2 | 1 ms |
| 0... 2.5 kPa | 30 kPa | + – 1.0 | + – 1.0 | + – 0.1 | + – 0.5 | 1 ms |
| 0... 5 kPa | 75 kPa | + – 1.0 | + – 1.0 | + – 0.1 | + – 0.5 | 1 ms |
| 0... 10 kPa | 100 kPa | + – 1.0 | + – 1.0 | + – 0.1 | + – 0.5 | 1 ms |
| 0... 25 kPa | 100 kPa | + – 1.0 | + – 1.0 | + – 0.1 | + – 0.5 | 1 ms |
| 0... 50 kPa | 100 kPa | + – 1.0 | + – 1.0 | + – 0.1 | + – 0.5 | 1 ms |
| 0... 100 kPa | 300 kPa | + – 1.0 | + – 1.0 | + – 0.1 | + – 0.5 | 1 ms |
| 0... 250 kPa | 600 kPa | + – 1.0 | + – 1.0 | + – 0.1 | + – 0.5 | 1 ms |

Measuring principle

Piezoresistive pressure transducer, suitable for air and non-aggressive gases.

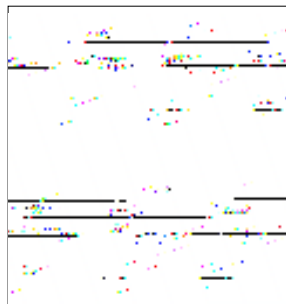
Temperature ranges

Compensated temperature range: 0... + 50° C

Operating range and storage range: 0... + 70° C from 250 Pa to 1 kPa; – 25... + 85° C from 2.5 to 250 kPa.



| | Pressure transmitter 980. xx | Digital manometer SensWitch® Display P2 | Pressure transmitter SensWitch® AD-14 |
|-----------------------|---|--|---|
| Pressure connection | 6 mm hose connector | 2 quick-release connections 4 or 6 mm on the back of the unit; alternatively 1 front pressure connection | 2 quick-release couplers 4 mm on the front of the unit |
| Supply voltage | 15...30 VDC with reverse voltage protection | 15...30 VDC with reverse voltage protection or 230 VAC | 15...30 VDC with reverse voltage protection |
| Output signals | 0...10 V short-circuit-proof 4...20 mA (two-wire system) | 0...10 V short-circuit-proof 4...20 mA (two-wire system) | 0...10 V short-circuit-proof 4...20 mA (two-wire system) |
| Switching outputs | on request | 2 (optional), load capacity 1A/230 VAC | 4, load capacity 100 mA/ 24 VDC per channel, open collector |
| Display | none | 3.5 digits, 7-segment LCD, figure height 12.7 mm, display of the sign, contrast ratio 1:8 | none |
| Electrical connection | connecting lead or plug connection | 7-pin connector, 16-pin connector for additional two-wire system | Screw connections for conductor up to maximum 2.5 mm ² |
| Mounting | 2 serrated screws, mounting bracket optional | Switchboard device according to DIN 43700 | Top-hat rail mounting according to DIN EN 50022-35 |
| Weight | 55 g | 500 g | 300 g |
| Protection category | IP 50 (optional IP 65) | IP 20 | IP 20 |



| | | | | | | |
|---|---|---|---|---|---|---|
| 1 | 2 | 3 | 4 | 5 | 6 | 7 |
| 1 = +U _B 2 = GND 3 = 0-10V 4 = GND 5 = NO1 6 = COM 7 = NO2 | | | | | | |

