



CDP 35



FUNCTION

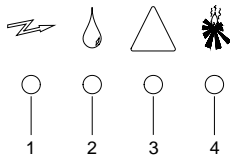
The CDP 35 works in accordance with the condensation principle. A fan draws the humid air into the dehumidifier and through an evaporator coil. When passing through the evaporator the air is cooled down to below its dew point temperature, and its content of water vapour is condensed into water, which falls into the drip tray and then is led from the drip tray to a drain. The cold, dry air is then passed over the condenser coil where it is re-heated, before leaving the unit at a temperature, which is approx. 5°C higher than at the inlet.

CONSTRUCTION

- The CDP 35 is built into a hot-galvanized sheet metal cabinet
- All external and internal parts of the cabinet are enamel powder painted
- The CDP 35 is fixed to the wall by means of a wall mounting strip supplied with the unit
- The condensate outlet is located at the bottom of the CDP 35. The outlet stub can be connected to a 1/2" water hose
- Air intake through a filter that is placed behind the front panel
- Rotary compressor
- Radial fan
- The CDP 35 can be floor mounted by means of a floor mounting kit (optional extra)

ELECTRONIC CONTROL

The CDP 35 has a built-in hygrostat and is fully automatic with electronic control. The hygrostat is factory set to approx. 60% RH. An easy to read display panel indicates the current status of operation.



1. Power on
2. Dehumidification – the compressor is on
3. Cooling circuit failure – the dehumidifier is switched off
4. After heating coil is activated. (Dantherm do not offer after heating coils for the CDP 35)

Passive, demand-controlled defrosting is incorporated in the electronic control. A sensor on the evaporator coil ensures that the evaporator is only defrosted when required. The compressor is switched off during defrosting and the fan blows room air through the evaporator, thereby melting the ice on the evaporator.

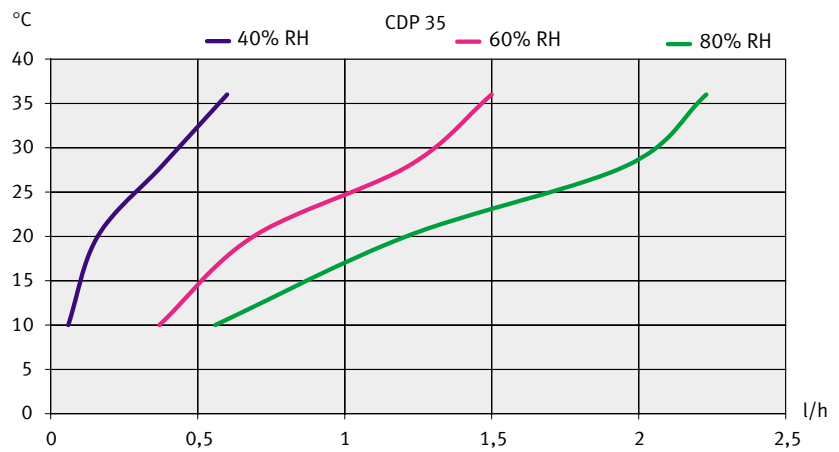
If the relative humidity has to be adjusted frequently, a remote room hygrostat can be connected to the CDP 35.



TECHNICAL DATA

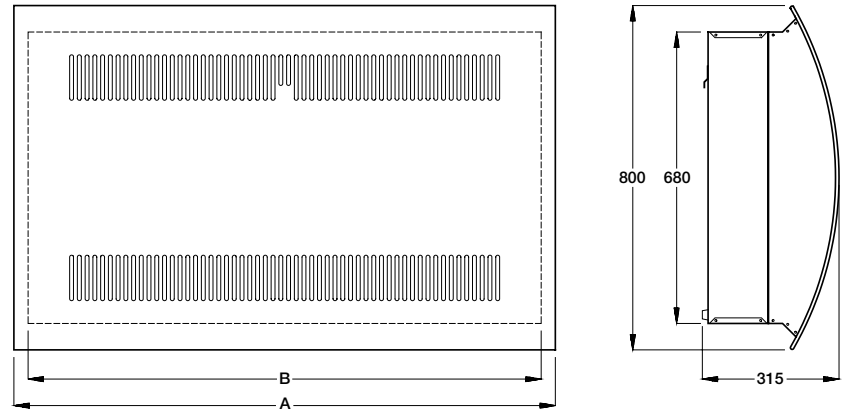
		CDP 35
Operating range – humidity	%RH	40 – 100
Operating range – temperature	°C	10 – 36
Air volume	m ³ /h	250
Power supply	V/Hz	1x230/50
Max. ampere consumption	A	2,8
Max. power consumption	kW	0,72
Refrigerant		R407C
Quantity of refrigerant	kg	0,600
Sound level (at 1 metre)	dB(A)	47
Weight	kg	60
Colour	RAL	7044 / 9016
Protection class		IPX4

CAPACITY CURVES



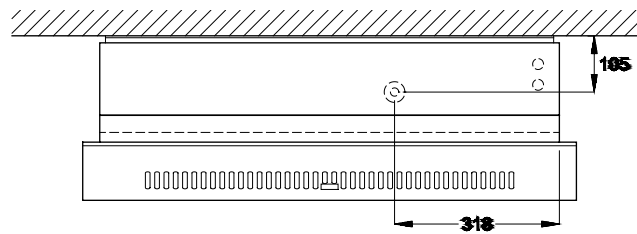


DIMENSIONS

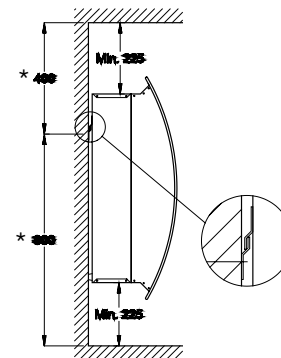


	A	B
CDP 35	950	890

Drain outlet position

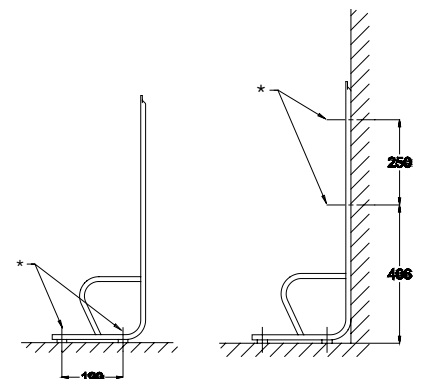
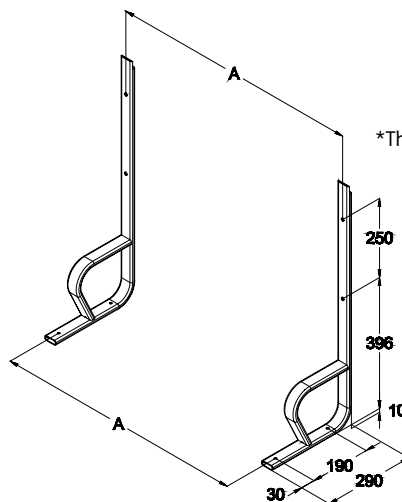


Recommended placing of the CDP 35



*The dimensions indicate the placing of the wall mounting strip

Floor mounting kit



* To be fixed to the floor or the wall

	A
CDP 35	645

- ACCESSORIES**
 Room hygrosat
 Floor mounting kit
 Ext. failure monitoring

All dimensions are in mm





CDP 45



FUNCTION

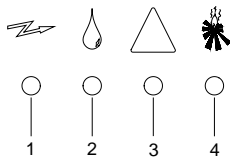
The CDP 45 works in accordance with the condensation principle. Two fans draw the humid air into the dehumidifier and through an evaporator coil. When passing through the evaporator the air is cooled down to below its dew point temperature, and its content of water vapour is condensed into water, which falls into the drip tray and then is led from the drip tray to a drain. The cold, dry air is then passed over the condenser coil where it is re-heated, before leaving the unit at a temperature, which is approx. 5°C higher than at the inlet.

CONSTRUCTION

- The CDP 45 is built into a hot-galvanized sheet metal cabinet
- All external and internal parts of the cabinet are enamel powder painted
- The CDP 45 is fixed to the wall by means of a wall mounting strip supplied with the unit
- The condensate outlet is located at the bottom of the CDP 45. The outlet stub can be connected to a 1/2" water hose
- Air intake through a filter that is placed behind the front panel
- Rotary compressor
- Radial fans
- The CDP 45 can be floor mounted using a floor mounting kit (optional extra)

ELECTRONIC CONTROL

The CDP 45 has a built-in hygrostat and is fully automatic with electronic control. The hygrostat is factory set to approx. 60% RH. An easy to read display panel indicates the current status of operation.



1. Power on
2. Dehumidification – the compressor is on
3. Cooling circuit failure – the dehumidifier is switched off
4. After heating coil is activated. (Dantherm do not offer after heating coils for the CDP 45)

Passive, demand-controlled defrosting is incorporated in the electronic control. A sensor on the evaporator coil ensures that the evaporator is only defrosted when required. The compressor is switched off during defrosting and the fans blow room air through the evaporator, thereby melting the ice on the evaporator.

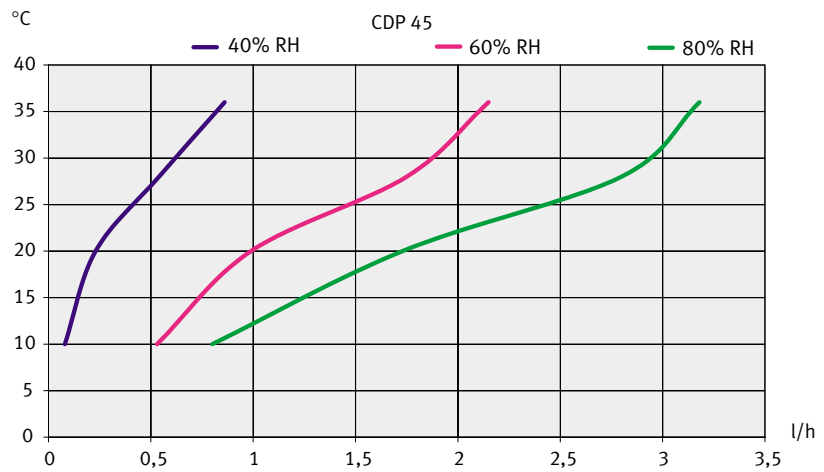
If the relative humidity has to be adjusted frequently, a remote room hygrostat can be connected to the CDP 45.



TECHNICAL DATA

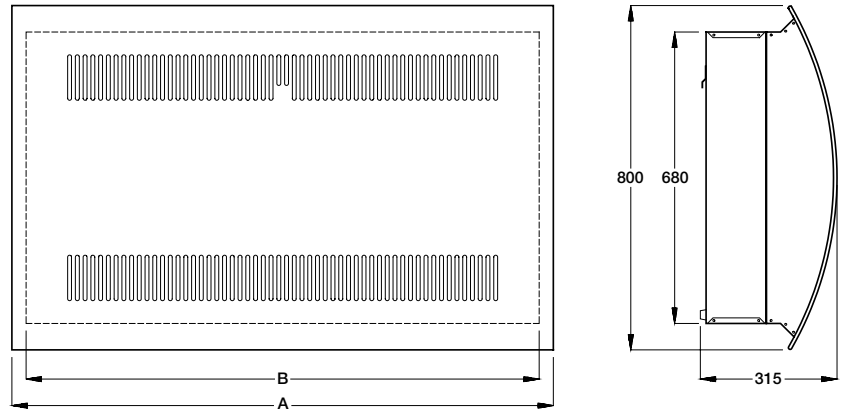
		CDP 45
Operating range – humidity	%RH	40 – 100
Operating range – temperature	°C	10 – 36
Air volume	m ³ /h	500
Power supply	V/Hz	1x230/50
Max. ampere consumption	A	4,3
Max. power consumption	kW	1,05
Refrigerant		R407C
Quantity of refrigerant	kg	0,950
Sound level (at 1 metre)	dB(A)	49
Weight	kg	74
Colour	RAL	7044 / 9016
Protection class		IPX4

CAPACITY CURVES



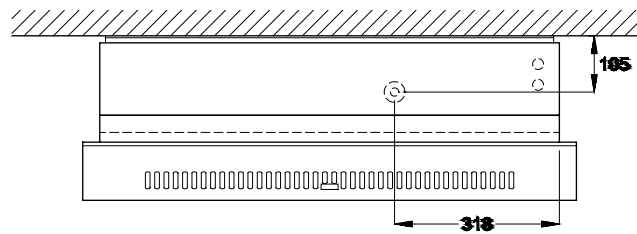


DIMENSIONS

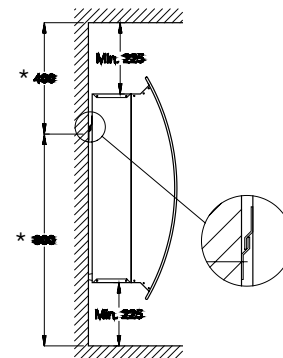


	A	B
CDP 45	1260	1200

Drain outlet position

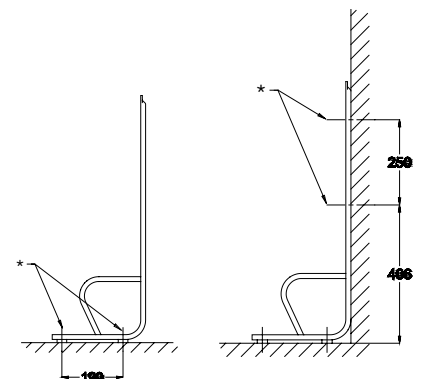
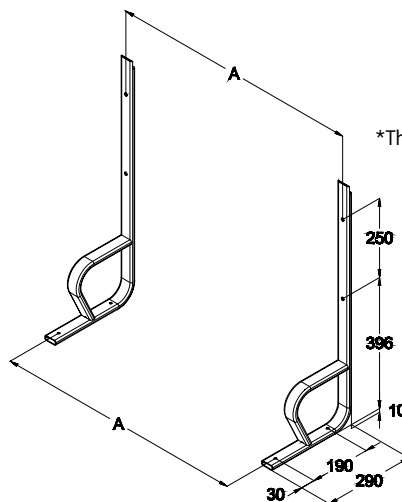


Recommended placing of the CDP 45



*The dimensions indicate the placing of the wall mounting strip

Floor mounting kit



* To be fixed to the floor or the wall

	A
CDP 45	950

- ACCESSORIES**
 Room hygostat
 Floor mounting kit
 Ext. failure monitoring

All dimensions are in mm





CDP 65

FUNCTION

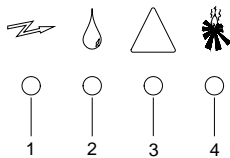
The CDP 65 works in accordance with the condensation principle. Three fans draw the humid air into the dehumidifier and through an evaporator coil. When passing through the evaporator the air is cooled down to below its dew point temperature, and its content of water vapour is condensed into water, which falls into the drip tray and then is led from the drip tray to a drain. The cold, dry air is then passed over the condenser coil where it is re-heated, before leaving the unit at a temperature, which is approx. 5°C higher than at the inlet.

CONSTRUCTION

- The CDP 65 is built into a hot-galvanized sheet metal cabinet
- All external and internal parts of the cabinet are enamel powder painted
- The CDP 65 is fixed to the wall by means of a wall mounting strip supplied with the unit
- The condensate outlet is located at the bottom of the CDP 65. The outlet stub can be connected to a 1/2" water hose
- Air intake through a filter that is placed behind the front panel
- Rotary compressor
- Radial fans
- The CDP 65 can be floor mounted using a floor mounting kit (optional extra)

ELECTRONIC CONTROL

The CDP 65 has a built-in hygrostat and is fully automatic with electronic control. The hygrostat is factory set to approx. 60% RH. An easy to read display panel indicates the current status of operation.



1. Power on
2. Dehumidification – the compressor is on
3. Cooling circuit failure – the dehumidifier is switched off
4. After heating coil is activated. (Dantherm do not offer after heating coils for the CDP 65)

Passive, demand-controlled defrosting is incorporated in the electronic control. A sensor on the evaporator coil ensures that the evaporator is only defrosted when required. The compressor is switched off during defrosting and the fans blow room air through the evaporator, thereby melting the ice on the evaporator.

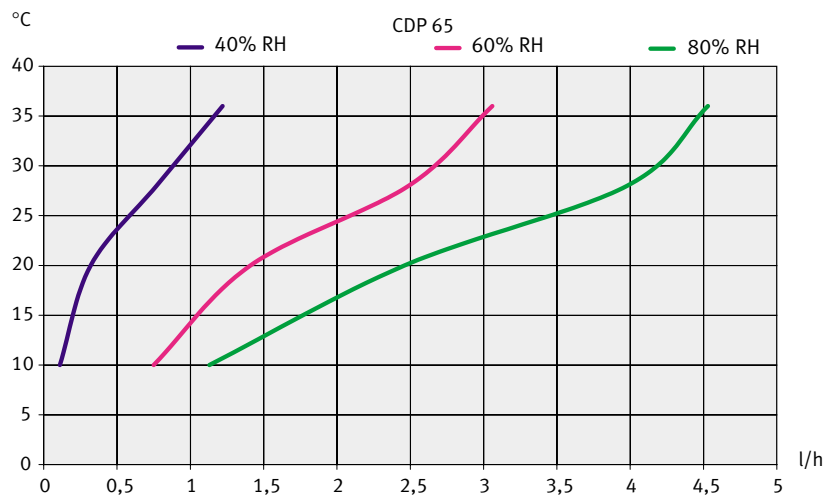
If the relative humidity has to be adjusted frequently, a remote room hygrostat can be connected to the CDP 65.



TECHNICAL DATA

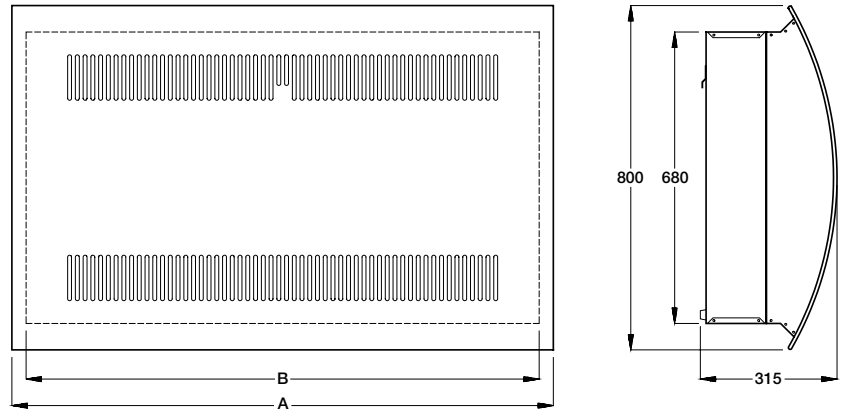
		CDP 65
Operating range – humidity	%RH	40 – 100
Operating range – temperature	°C	10 – 36
Air volume	m ³ /h	750
Power supply	V/Hz	1x230/50
Max. ampere consumption	A	7,2
Max. power consumption	kW	1,65
Refrigerant		R407C
Quantity of refrigerant	kg	1,600
Sound level (at 1 metre)	dB(A)	51
Weight	kg	101
Colour	RAL	7044 / 9016
Protection class		IPX4

CAPACITY CURVES



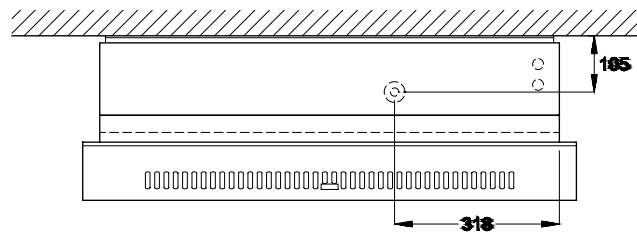


DIMENSIONS

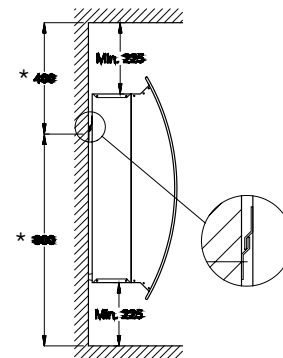


	A	B
CDP 65	1800	1735

Drain outlet position

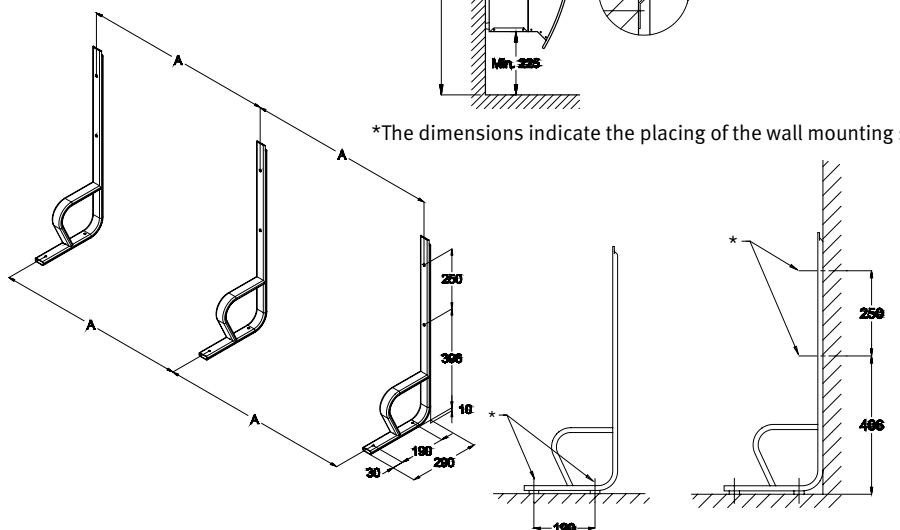


Recommended placing of the CDP 65



*The dimensions indicate the placing of the wall mounting strip

Floor mounting kit



* To be fixed to the floor or the wall

	A
CDP 65	745

- ACCESSORIES**
 Room hygrosat
 Floor mounting kit
 Ext. failure monitoring

All dimensions are in mm





CDP 35T



FUNCTION

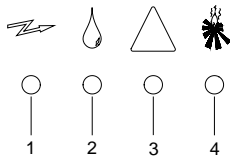
The CDP 35T works in accordance with the condensation principle. A fan draws the humid air into the dehumidifier and through an evaporator coil. When passing through the evaporator the air is cooled down to below its dew point temperature, and its content of water vapour is condensed into water, which falls into the drip tray and then is led from the drip tray to a drain. The cold, dry air is then passed over the condenser coil where it is re-heated, before leaving the unit at a temperature, which is approx. 5°C higher than at the inlet.

CONSTRUCTION

- The CDP 35T is built into a hot-galvanized sheet metal cabinet
- All external and internal parts of the cabinet are enamel powder painted
- The CDP 35T is fixed to the wall by means of a wall mounting strip supplied with the unit
- The condensate outlet is located at the bottom of the CDP 35T. The outlet stub can be connected to a 1/2" water hose
- Rotary compressor
- Radial fan
- Duct kit including alu-grilles, filter and through-wall ducting suitable for wall thicknesses from 70 to 350 mm (optional extra).

ELECTRONIC CONTROL

The CDP 35T has a built-in hygrostat and is fully automatic with electronic control. The hygrostat is factory set to approx. 60% RH. An easy to read display panel indicates the current status of operation.



1. Power on
2. Dehumidification – the compressor is on
3. Cooling circuit failure – the dehumidifier is switched off
4. After heating coil is activated. (Dantherm do not offer after heating coils for the CDP 35T)

Passive, demand-controlled defrosting is incorporated into the electronic control. A sensor on the evaporator coil ensures that the evaporator is only defrosted when required. The compressor is switched off during defrosting and the fan blows room air through the evaporator, thereby melting the ice on the evaporator.

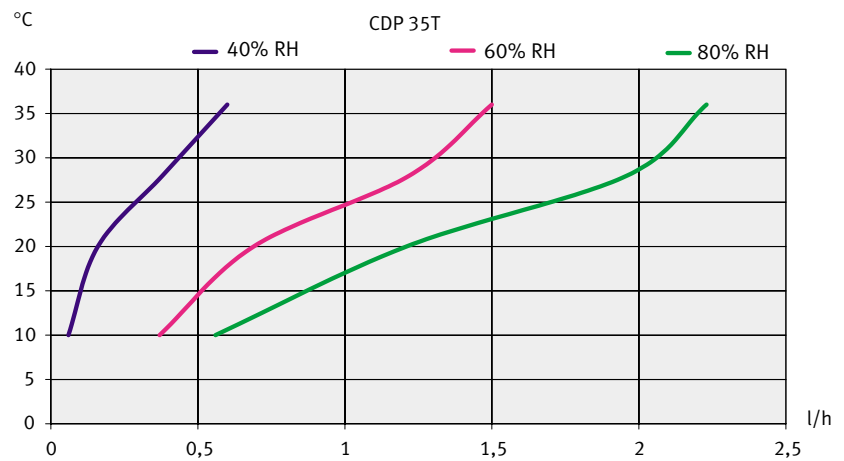
If the relative humidity has to be adjusted frequently, a remote room hygrostat can be connected to the CDP 35T.



TECHNICAL DATA

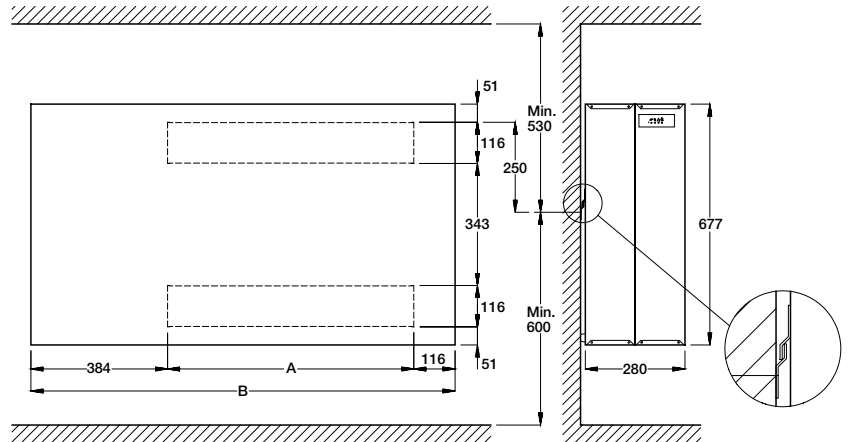
		CDP 35T
Operating range – humidity	%RH	40 – 100
Operating range – temperature	°C	10 – 36
Air volume	m ³ /h	250
Power supply	V/Hz	1x230/50
Max. ampere consumption	A	2,8
Max. power consumption	kW	0,72
Refrigerant		R407C
Quantity of refrigerant	kg	0,600
Sound level (at 1 metre)	dB(A)	44
Weight	kg	57
Colour	RAL	7044
Protection class		IPX4

CAPACITY CURVES



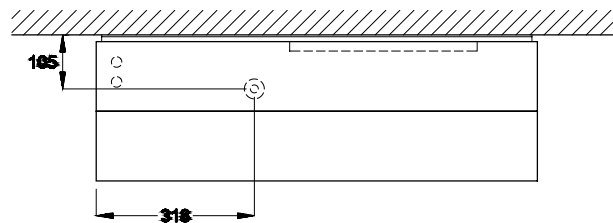


DIMENSIONS

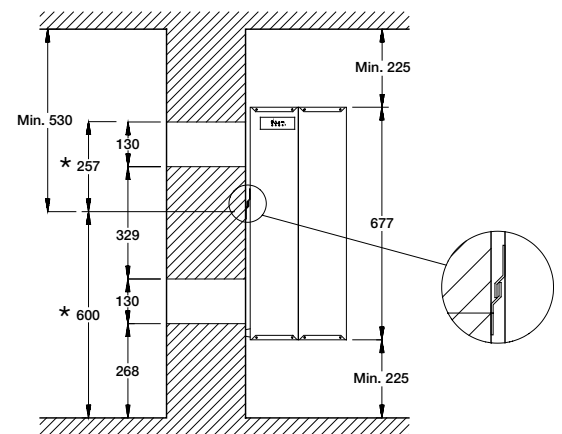


	A	B	Duct opening in the wall
CDP 35T	387	887	130x410

Drain outlet position



Recommended placing of the CDP 35T

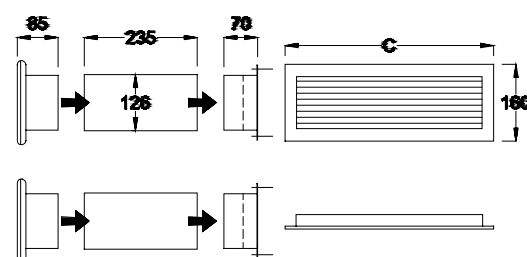


*The dimensions indicate the placing of the wall mounting strip

ACCESSORIES

- Room hygrosstat
- Through-wall duct kit
- Adapter
- Ext. failure monitoring

Through-wall duct kit



	C
CDP 35T	434

All dimensions are in mm



CDP 45T

FUNCTION

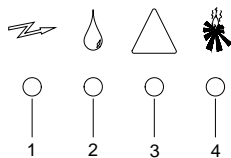
The CDP 45T works in accordance with the condensation principle. Two fans draw the humid air into the dehumidifier and through an evaporator coil. When passing through the evaporator the air is cooled down to below its dew point temperature, and its content of water vapour is condensed into water, which falls into the drip tray and then is led from the drip tray to a drain. The cold, dry air is then passed over the condenser coil where it is re-heated, before leaving the unit at a temperature, which is approx. 5°C higher than at the inlet.

CONSTRUCTION

- The CDP 45T is built into a hot-galvanized sheet metal cabinet
- All external and internal parts of the cabinet are enamel powder painted
- The CDP 45T is fixed to the wall by means of a wall mounting strip supplied with the unit
- The condensate outlet is located at the bottom of the CDP 45T. The outlet stub can be connected to a 1/2" water hose
- Rotary compressor
- Radial fans
- Duct kit including alu-grilles, filter and through-wall ducting suitable for wall thicknesses from 70 to 350 mm (optional extra).

ELECTRONIC CONTROL

The CDP 45T has a built-in hygrostat and is fully automatic with electronic control. The hygrostat is factory set to approx. 60% RH. An easy to read display panel indicates the current status of operation.



1. Power on
2. Dehumidification – the compressor is on
3. Cooling circuit failure – the dehumidifier is switched off
4. After heating coil is activated. (Dantherm do not offer after heating coils for the CDP 45T)

Passive, demand-controlled defrosting is incorporated in the electronic control. A sensor on the evaporator coil ensures that the evaporator is only defrosted when required. The compressor is switched off during defrosting and the fans blow room air through the evaporator, thereby melting the ice on the evaporator.

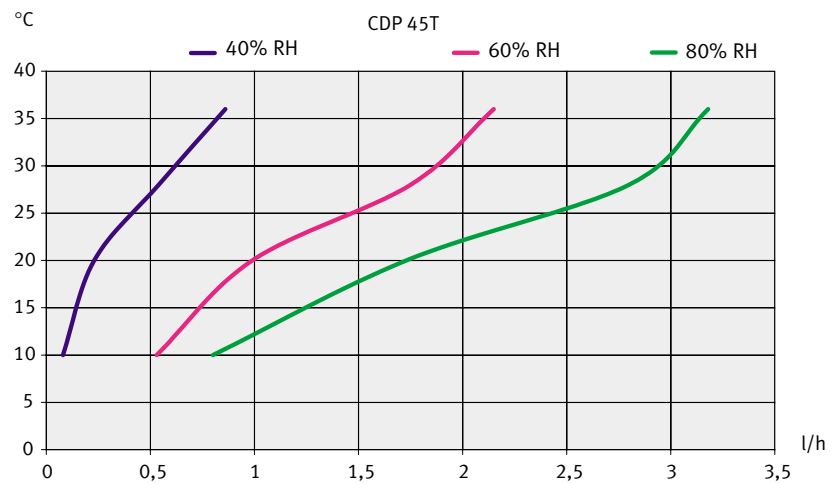
If the relative humidity has to be adjusted frequently, a remote room hygrostat can be connected to the CDP 45T.



TECHNICAL DATA

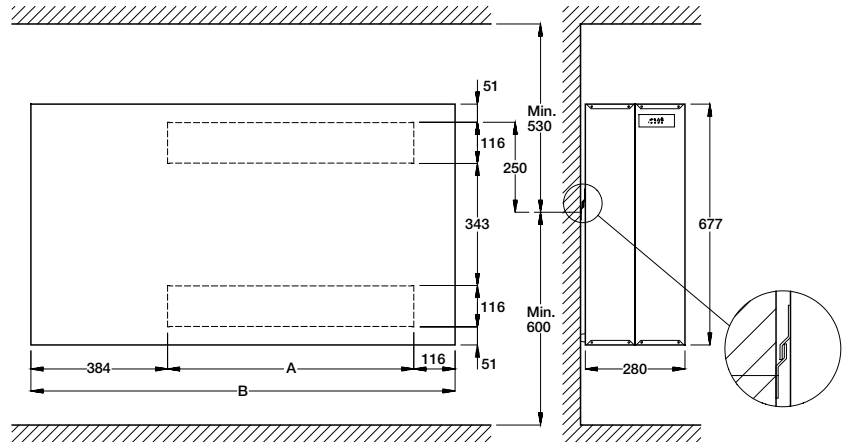
		CDP 45T
Operating range – humidity	%RH	40 – 100
Operating range – temperature	°C	10 – 36
Air volume	m ³ /h	500
Power supply	V/Hz	1x230/50
Max. ampere consumption	A	4,3
Max. power consumption	kW	1,05
Refrigerant		R407C
Quantity of refrigerant	kg	0,950
Sound level (at 1 metre)	dB(A)	46
Weight	kg	68
Colour	RAL	7044
Protection class		IPX4

CAPACITY CURVES



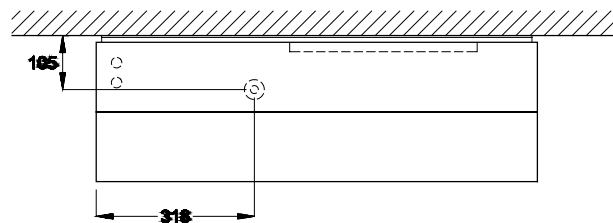


DIMENSIONS

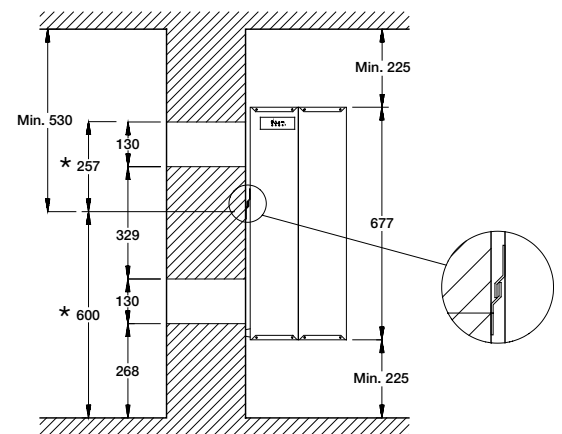


	A	B	Duct opening in the wall
CDP 45T	692	1192	130x720

Drain outlet position



Recommended placing of the CDP 45T

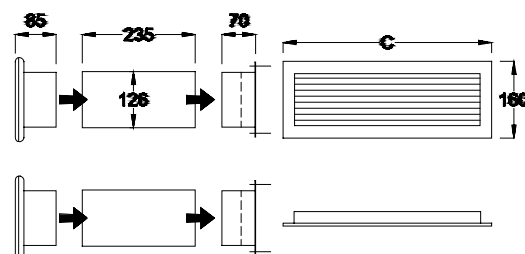


*The dimensions indicate the placing of the wall mounting strip

ACCESSORIES

- Room hygrosstat
- Through-wall duct kit
- Adapter
- Ext. failure monitoring

Through-wall duct kit



	C
CDP 45T	743

All dimensions are in mm





CDP 65T

FUNCTION

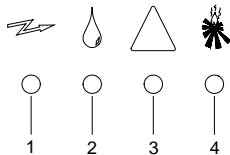
The CDP 65T works in accordance with the condensation principle. Three fans draw the humid air into the dehumidifier and through an evaporator coil. When passing through the evaporator the air is cooled down to below its dew point temperature, and its content of water vapour is condensed into water, which falls into the drip tray and then is led from the drip tray to a drain. The cold, dry air is then passed over the condenser coil where it is re-heated, before leaving the unit at a temperature, which is approx. 5°C higher than at the inlet.

CONSTRUCTION

- The CDP 65T is built into a hot-galvanized sheet metal cabinet
- All external and internal parts of the cabinet are enamel powder painted
- The CDP 65T is fixed to the wall by means of a wall mounting strip supplied with the unit
- The condensate outlet is located at the bottom of the CDP 65T. The outlet stub can be connected to a 1/2" water hose
- Rotary compressor
- Radial fans
- Duct kit including alu-grilles, filter and through-wall ducting suitable for wall thicknesses from 70 to 350 mm (optional extra).

ELECTRONIC CONTROL

The CDP 65T has a built-in hygrostat and is fully automatic with electronic control. The hygrostat is factory set to approx. 60% RH. An easy to read display panel indicates the current status of operation.



1. Power on
2. Dehumidification – the compressor is on
3. Cooling circuit failure – the dehumidifier is switched off
4. After heating coil is activated. (Dantherm do not offer after heating coils for the CDP 65T)

Passive, demand-controlled defrosting is incorporated in the electronic control. A sensor on the evaporator coil ensures that the evaporator is only defrosted when required. The compressor is switched off during defrosting and the fans blow room air through the evaporator, thereby melting the ice on the evaporator.

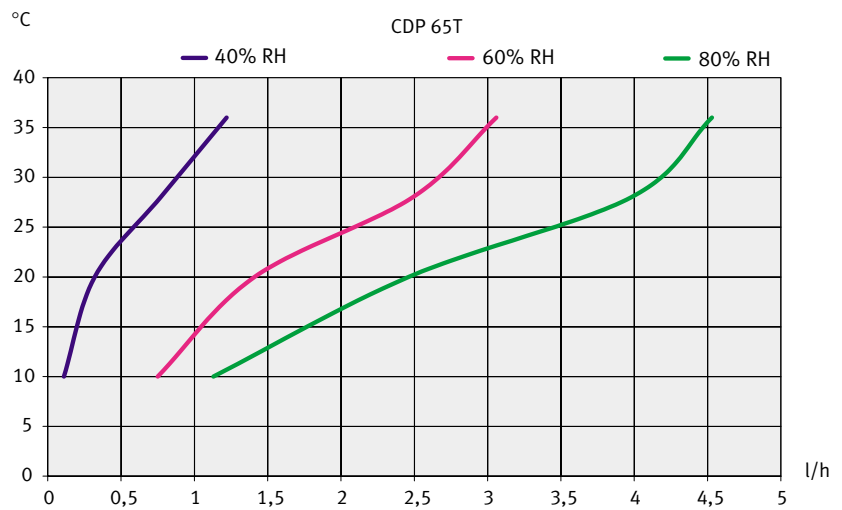
If the relative humidity has to be adjusted frequently, a remote room hygrostat can be connected to the CDP 65T.



TECHNICAL DATA

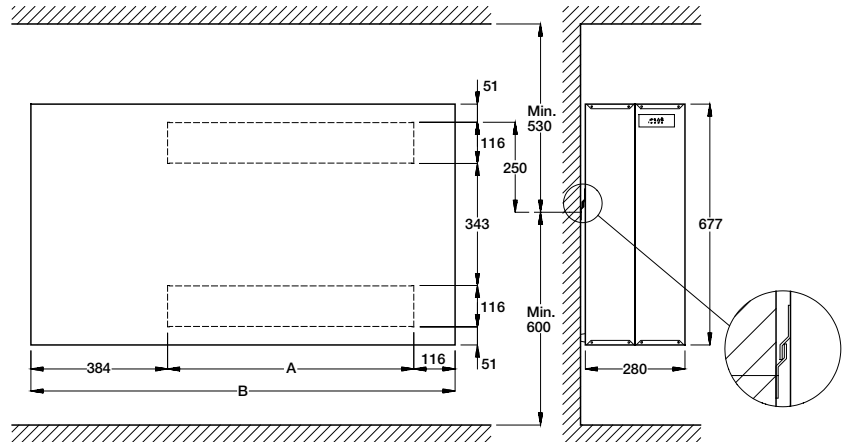
		CDP 65T
Operating range – humidity	%RH	40 – 100
Operating range – temperature	°C	10 – 36
Air volume	m ³ /h	750
Power supply	V/Hz	1x230/50
Max. ampere consumption	A	7,2
Max. power consumption	kW	1,65
Refrigerant		R407C
Quantity of refrigerant	kg	1,600
Sound level (at 1 metre)	dB(A)	48
Weight	kg	95
Colour	RAL	7044
Protection class		IPX4

CAPACITY CURVES



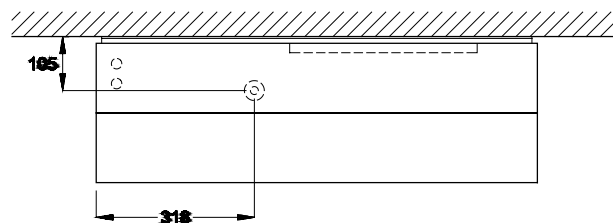


DIMENSIONS

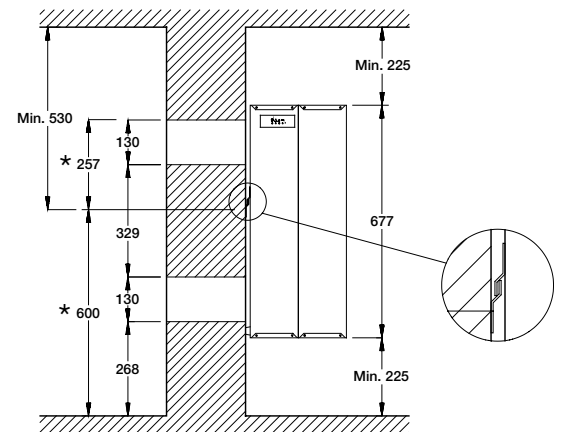


	A	B	Duct opening in the wall
CDP 65T	1232	1732	130x1260

Drain outlet position



Recommended placing of the CDP 65T

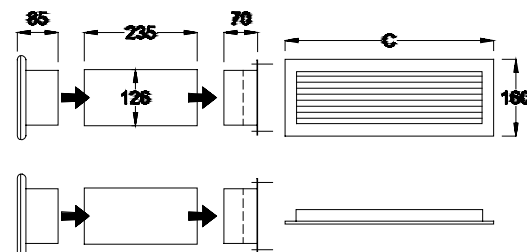


*The dimensions indicate the placing of the wall mounting strip

ACCESSORIES

- Room hygrostat
- Through-wall duct kit
- Adapter
- Ext. failure monitoring

Through-wall duct kit



	C
CDP 65T	1284

All dimensions are in mm



**ACCESSORY**

Adapter for CDP 35T/45T/65T



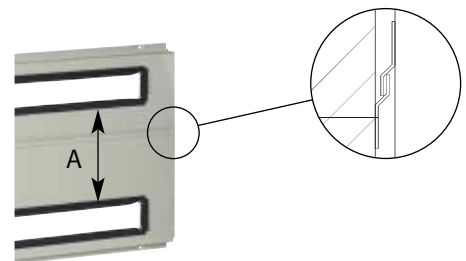
The adapter seen from the front

The adapter makes it possible to place the CDP 35T/45T/65T on the wall without changing the existing wall openings.



The adapter seen from the back

The duct openings for outlet of the dehumidified air should be placed directly opposite each other. The partition profile between the openings at the back of the adapter is to be placed between the two existing duct openings in the wall.



The adapter is fixed correctly when the suspension profile points upwards. The distance (A) between the duct openings is 343 mm. Adapter surfaces and duct openings are fitted with sealing strips.

Dimensions of adapter duct openings:

	Height	Length
CDP 35T	116	387
CDP 45T	116	692
CDP 65T	116	1232

Adapter depth amounts to 72 mm.

All dimensions are in mm



CDP 75



FUNCTION

The CDP 75 works in accordance with the condensation principle. A fan draws the humid air into the dehumidifier and through an evaporator coil. When passing through the evaporator the air is cooled down to below its dew point temperature, and its content of water vapour is condensed into water, which falls into the drip tray and then is led from the drip tray to a drain. The cold, dry air is then passed over the condenser coil where it is re-heated, before leaving the unit at a temperature, which is approx. 5°C higher than at the inlet.

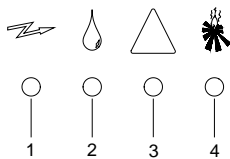
CONSTRUCTION

- The CDP 75 is built into a cabinet made of hot-galvanized double-skinned panels with 50 mm insulation
- All external and internal parts of the cabinet are enamel powder painted
- The condensate outlet is located on the air inlet side of the CDP 75. The outlet stub can be connected to a 3/4" water hose.
- Ø400mm air inlet through a filter placed in a removable frame
- Ø400mm dry air outlet positioned either horizontally, or vertically through the top of the unit
- The access for inspection can be moved to the opposite side
- Fresh air inlet possible through Ø160mm fresh air duct
- The CDP 75 can be supplied with an optional water-cooled condenser. The Ø15mm coupling pipes of the water-cooled condenser are made of copper
- Rotary compressor
- Radial fan
- The CDP 75 can be wall mounted utilising the wall mount kit or it can be placed on the floor utilising the shockabsorbing floor mount kit (optional extra)
- A water heating coil can be mounted in the air outlet duct for further heating of the dry air (optional extra)

Capacity of water-cooled condenser

		CDP 75
Connection	mm	Ø15
Max. water flow	l/h	600
Max. capacity*	kW	4,0
Pressure drop	kPa	10

* Running conditions: LP 10°C, HP 40°C, water temperature 28°C



ELECTRONIC CONTROL

The CDP 75 is fully automatic with electronic control. An easy to read display panel indicates the current status of operation.

1. Power on
2. Dehumidification – the compressor is on
3. Cooling circuit failure – the dehumidifier is switched off
4. Water heating coil is activated

Push buttons allow switching on and off control of dehumidification, re-heating coil and continuous ventilation.

If a controlled and constant relative humidity is required, room or duct hygrometers can be connected to the CDP 75. If the CDP 75 is used with a water-heating coil, the control is prepared for connection of a room thermostat.

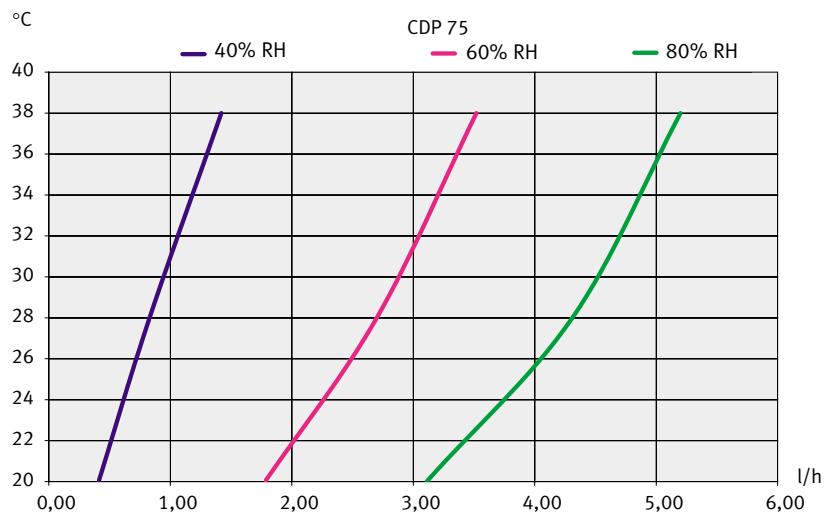
If the CDP 75 is used in the temperature range between 15 and 20°C, passive, demand-controlled defrosting can be achieved by fitting a defrosting sensor on the evaporator coil.



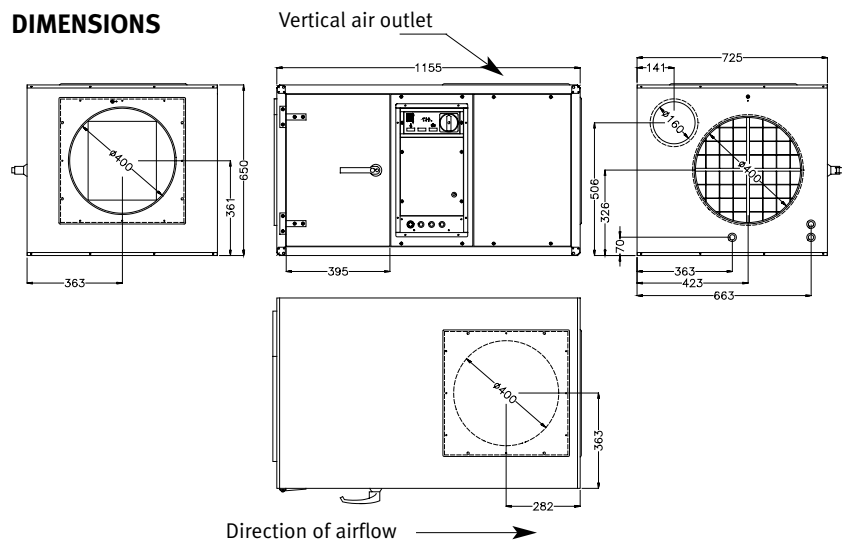
TECHNICAL DATA

		CDP 75
Operating range – humidity	%RH	40 – 100
Operating range – temperature	°C	20 – 38
Air volume	m ³ /h	1500
Max. external pressure	Pa	170
Max. fresh air supply	m ³ /h	225
Power supply	V/Hz	1x230/50
Max. ampere consumption	A	9,5
Max. power consumption	kW	1,85
Refrigerant		R407C
Quantity of refrigerant	kg	2,100
Sound level (at 1 metre)	dB(A)	58
Weight	kg	130
Filter		EU 3
Colour	RAL	9016
Protection class		IPX4

CAPACITY CURVES



DIMENSIONS



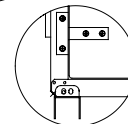
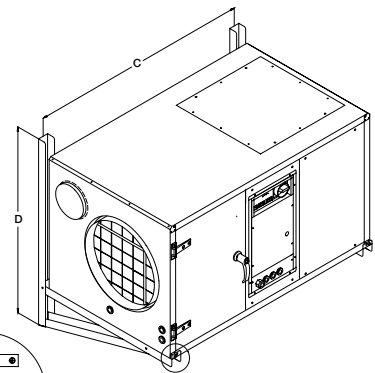
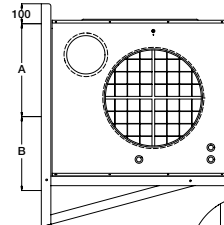


ACCESSORIES

- Wall mount kit
- Shockabsorbing floor mount kit
- Water heating coil
- Room hygrostat
- Duct hygrostat
- Room thermostat
- Defrost sensor
- Ext. failure monitoring

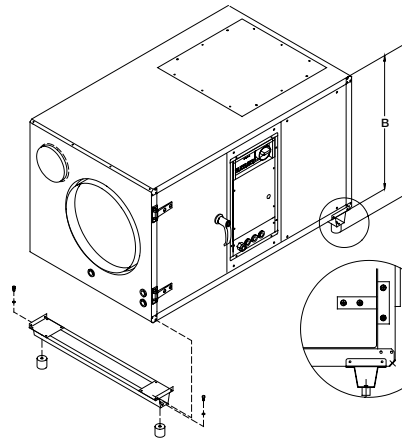
Wall mount kit

	A	B	C	D
CDP 75	365	270	1092	932

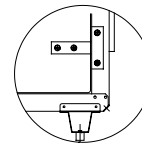


The bracket is fastened by a screw in the popnut

Shockabsorbing floor mount kit

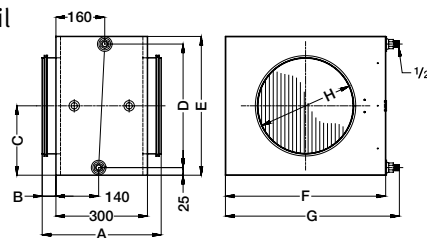


	A	B
CDP 75	745±2	650



The floor mount kit is fastened by a M5 sheet metal screw

Water heating coil



	A	B	C	D	E	F	G	H	Kg
Ø400	410	55	240	430	580	650	695	400	28

Capacity of water heating coil

CDP 75		2RR	2RR	2RR
Connection		1/2"	1/2"	1/2"
Duct connection	mm	Ø400	Ø400	Ø400
Water temperature	°C	82/71	80/60	70/35
Air volume	m ³ /h	1500	1500	1500
Air outlet temperature	°C	56,78	51,67	36,56
Capacity	kW	15,15	12,54	4,86
Water flow	l/h	1152	504	108
Pressure drop, water	kPa	5,68	1,40	0,09
Pressure drop, air	Pa	11,10	11,01	10,75

The technical specifications of the water heating coils are based on a room temperature of 27°C

All dimensions are in mm





CDP 125

FUNCTION

The CDP 125 works in accordance with the condensation principle. A fan draws the humid air into the dehumidifier and through an evaporator coil. When passing through the evaporator the air is cooled down to below its dew point temperature, and its content of water vapour is condensed into water, which falls into the drip tray and then is led from the drip tray to a drain. The cold, dry air is then passed over the condenser coil where it is re-heated, before leaving the unit at a temperature, which is approx. 5°C than at the inlet.

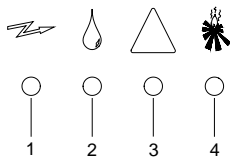
CONSTRUCTION

- The CDP 125 is built into a cabinet made of hot-galvanized double-skinned panels with 50 mm insulation
- All external and internal parts of the cabinet are enamel powder painted
- The condensate outlet is located on the air inlet side of the CDP 125. The outlet stub can be connected to a 3/4" water hose
- Ø400mm air inlet through a filter placed in a removable frame
- Ø400mm dry air outlet positioned either horizontally, or vertically through the top of the unit
- The access for inspection can be moved to the opposite side
- Fresh air inlet possible through Ø160mm fresh air duct
- The CDP 125 can be supplied with an optional water-cooled condenser. The Ø15mm coupling pipes of the water-cooled condenser are made of copper
- Reciprocating compressor
- Radial fan
- The CDP 125 can be wall mounted utilising the wall mount kit or it can be placed on the floor utilising the shockabsorbing floor mount kit (optional extra)
- A water heating coil can be mounted in the air outlet duct for further heating of the dry air (optional extra)

Capacity of water-cooled condenser

		CDP 125
Connection	mm	Ø15
Max. water flow	l/h	700
Max. capacity*	kW	4,5
Pressure drop	kPa	13

* Running conditions: LP 10°C, HP 40°C, water temperature 28°C



ELECTRONIC CONTROL

The CDP 125 is fully automatic with electronic control. An easy to read display panel indicates the current status of operation.

1. Power on
2. Dehumidification – the compressor is on
3. Cooling circuit failure – the dehumidifier is switched off
4. Water heating coil is activated

Push buttons allow switching on and off control of dehumidification, re-heating coil and continuous ventilation.

If a controlled and constant relative humidity is required, room or duct hygrometers can be connected to the CDP 125. If the CDP 125 is used with a water-heating coil, the control is prepared for connection of a room thermostat.

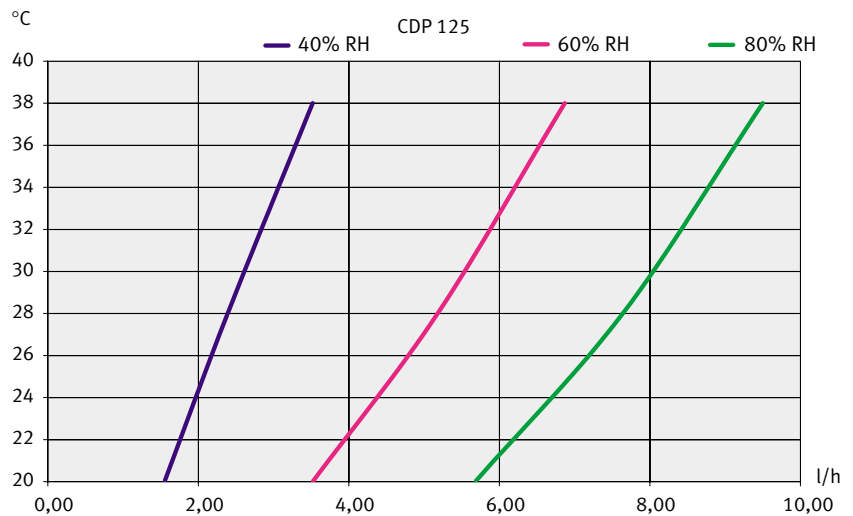
If the CDP 125 is used in the temperature range between 15 and 20°C, passive, demand-controlled defrosting can be achieved by fitting a defrosting sensor on the evaporator coil.



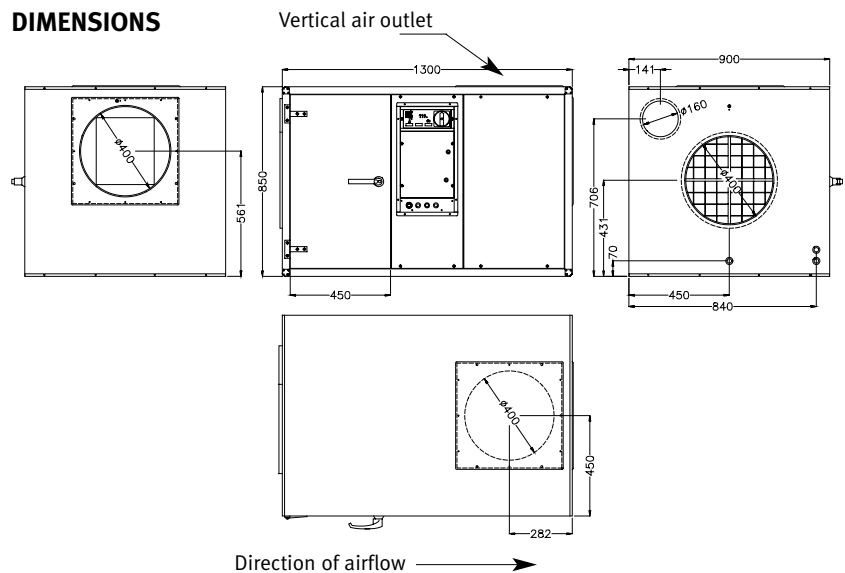
TECHNICAL DATA

		CDP 125
Operating range – humidity	%RH	40 – 100
Operating range – temperature	°C	20 – 38
Air volume	m ³ /h	2500
Max. external pressure	Pa	230
Max. fresh air supply	m ³ /h	375
Power supply	V/Hz	1x230/50 / 3x400/50
Max. ampere consumption	A	14,0 / 7,6
Max. power consumption	kW	3,2
Refrigerant		R407C
Quantity of refrigerant	kg	5,200
Sound level (at 1 metre)	dB(A)	60
Weight	kg	160
Filter		EU 3
Colour	RAL	9016
Protection class		IPX4

CAPACITY CURVES



DIMENSIONS



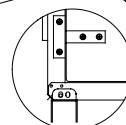
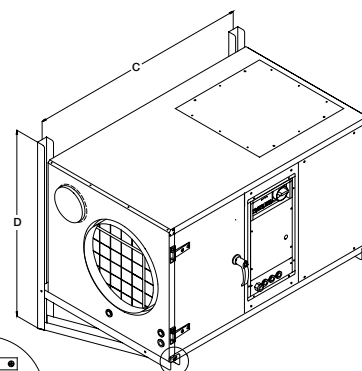
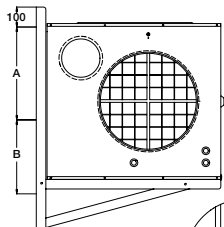


ACCESSORIES

- Wall mount kit
- Shockabsorbing floor mount kit
- Water heating coil
- Room hygrostat
- Duct hygrostat
- Room thermostat
- Defrost sensor
- Ext. failure monitoring

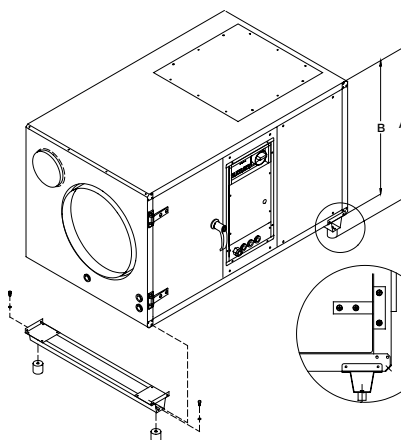
Wall mount kit

	A	B	C	D
CDP 125	465	370	1237	1180

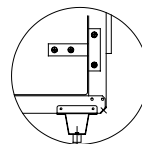


The bracket is fastened by a screw in the popnut

Shockabsorbing floor mount kit

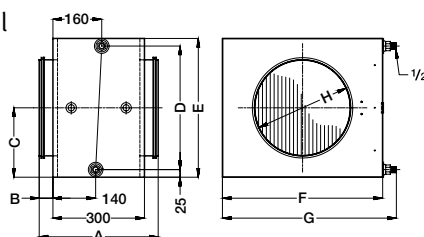


	A	B
CDP 125	942±2	850



The floor mount kit is fastened by a M5 sheet metal screw

Water heating coil



	A	B	C	D	E	F	G	H	Kg
Ø400	410	55	240	430	580	650	695	400	28

Capacity of water heating coils

CDP 125		2RR	2RR	2RR
Connection		1/2"	1/2"	1/2"
Duct connection	mm	Ø400	Ø400	Ø400
Water temperature	°C	82/71	80/60	70/35
Air volume	m ³ /h	2500	2500	2500
Air outlet temperature	°C	51,58	47,11	34,42
Capacity	kW	20,84	17,05	6,29
Water flow	l/h	1620	720	144
Pressure drop, water	kPa	10,09	2,44	0,15
Pressure drop, air	Pa	28,63	28,42	27,84

All dimensions are in mm

The technical specifications of the water heating coils are based on a room temperature of 27°C





CDP 165

FUNCTION

The CDP 165 works in accordance with the condensation principle. A fan draws the humid air into the dehumidifier and through an evaporator coil. When passing through the evaporator the air is cooled down to below its dew point temperature, and its content of water vapour is condensed into water, which falls into the drip tray and then is led from the drip tray to a drain. The cold, dry air is then passed over the condenser coil where it is re-heated, before leaving the unit at a temperature, which is approx. 5°C higher than at the inlet.

CONSTRUCTION

- The CDP 165 is built into a cabinet made of hot-galvanized double-skinned panels with 50 mm insulation
- All external and internal parts of the cabinet are enamel powder painted
- The condensate outlet is located on the air inlet side of the CDP 165. The outlet stub can be connected to a 3/4" water hose.
- Ø500mm air inlet through a filter placed in a removable frame
- Ø500mm dry air outlet positioned either horizontally, or vertically through the top of the unit
- The access for inspection can be moved to the opposite side
- Fresh air inlet possible through Ø160mm fresh air duct
- The CDP 165 can be supplied with an optional water-cooled condenser. The Ø15mm coupling pipes of the water-cooled condenser are made of copper
- Reciprocating compressor
- Radial fan
- The CDP 165 can be placed on the floor utilising the shockabsorbing floor mount kit (optional extra)
- A water heating coil can be mounted in the air outlet duct for further heating of the dry air (optional extra)

Capacity of water-cooled condenser

		CDP 165
Connection	mm	Ø15
Max. water flow	l/h	800
Max. capacity*	kW	5,5
Pressure drop	kPa	16

* Running conditions: LP 10°C, HP 40°C, water temperature 28°C

ELECTRONIC CONTROL

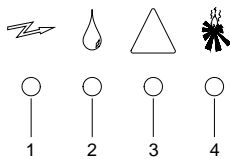
The CDP 165 is fully automatic with electronic control. An easy to read display panel shows the current status of operation.

1. Power on
2. Dehumidification – the compressor is on
3. Cooling circuit failure – the dehumidifier is switched off
4. Water heating coil is activated

Push buttons allow switching on and off control of dehumidification, re-heating coil and continuous ventilation.

If a controlled and constant relative humidity is required, room or duct hygrometers can be connected to the CDP 165. If the CDP 165 is used with a water-heating coil, the control is prepared for connection of a room thermostat.

If the CDP 165 is used in the temperature range between 15 and 20°C, passive, demand-controlled defrosting can be achieved by fitting a defrosting sensor on the evaporator coil.

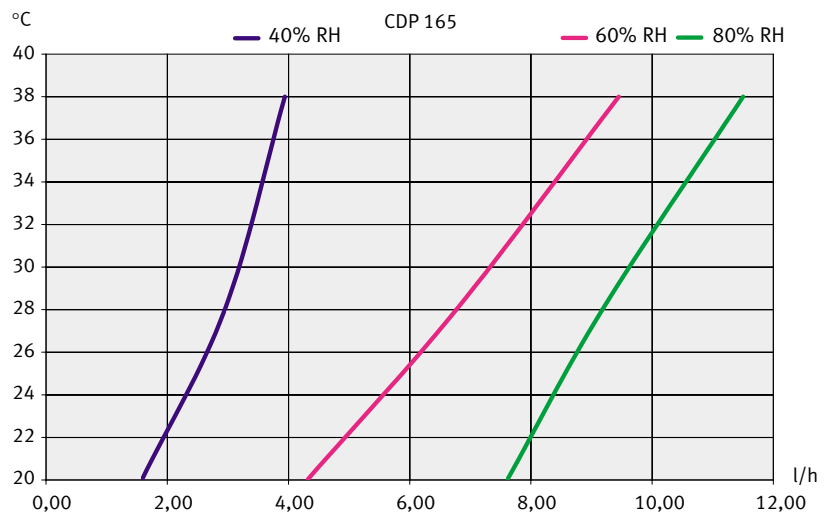




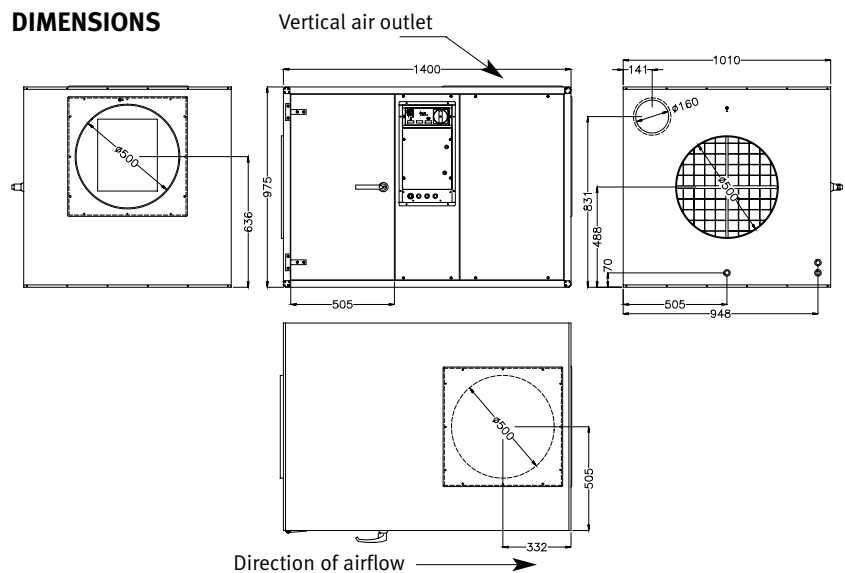
TECHNICAL DATA

		CDP 165
Operating range – humidity	%RH	40 – 100
Operating range – temperature	°C	20 – 38
Air volume	m ³ /h	3600
Max. external pressure	Pa	240
Max. fresh air supply	m ³ /h	540
Power supply	V/Hz	3x230/50 / 3x400/50
Max. ampere consumption	A	20,2 / 11,5
Max. power consumption	kW	4,3
Refrigerant		R407C
Quantity of refrigerant	kg	6,800
Sound level (at 1 metre)	dB(A)	63
Weight	kg	190
Filter		EU 3
Colour	RAL	9016
Protection class		IPX4

CAPACITY CURVES



DIMENSIONS

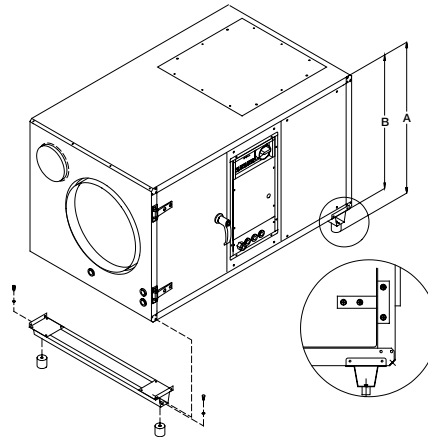




ACCESSORIES

- Shockabsorbing floor mount kit
- Water heating coil
- Room hygostat
- Duct hygostat
- Room thermostat
- Defrost sensor
- Ext. failure monitoring

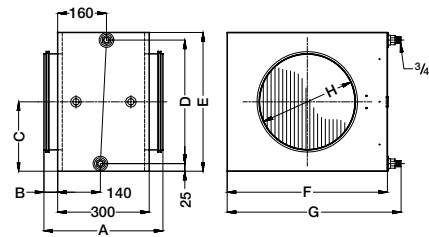
Shockabsorbing floor mount kit



	A	B
CDP 165	1067±2	975

The floor mount kit is fastened by a M5 sheet metal screw

Water heating coil



	A	B	C	D	E	F	G	H	Kg
Ø500	410	55	352	655	705	775	820	500	34

Capacity of water heating coils

CDP 165		2RR	2RR	2RR
Connection		3/4"	3/4"	3/4"
Duct connection	mm	Ø500	Ø500	Ø500
Water temperature	°C	82/71	80/60	70/35
Air volume	m ³ /h	3600	3600	3600
Air outlet temperature	°C	52,29	47,86	35,09
Capacity	kW	30,87	25,47	9,87
Water flow	l/h	2376	1080	216
Pressure drop, water	kPa	13,17	3,24	0,22
Pressure drop, air	Pa	25,92	25,74	25,21

The technical specifications of the water heating coils are based on a room temperature of 27°C

All dimensions are in mm





Large swimming pools and similar applications

For dehumidification of swimming pools and other fields of use that are beyond the capacities mentioned in this catalogue - please consult Dantherm's ventilation catalogue in which you will find detailed information of heat pumps especially for swimming pool dehumidification.



