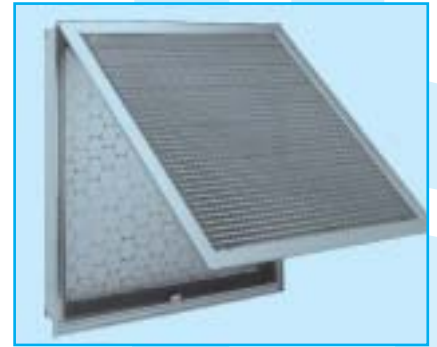
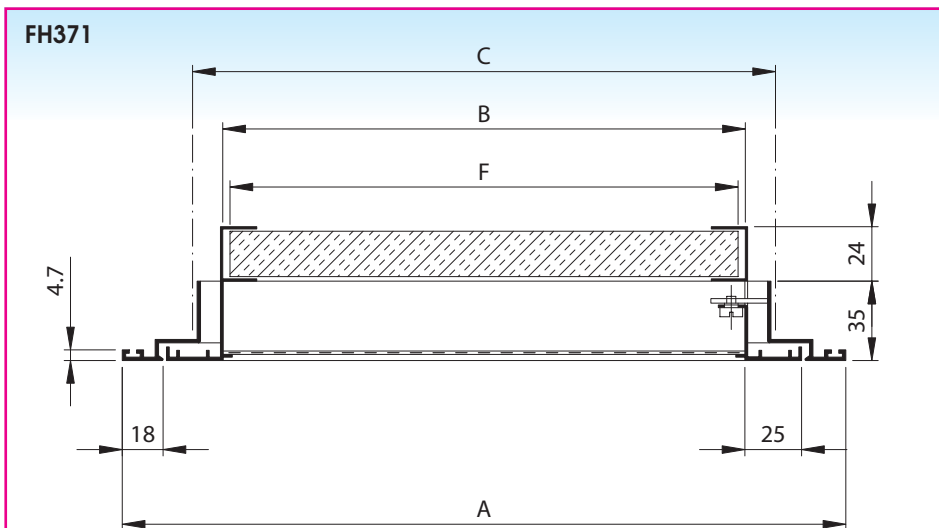
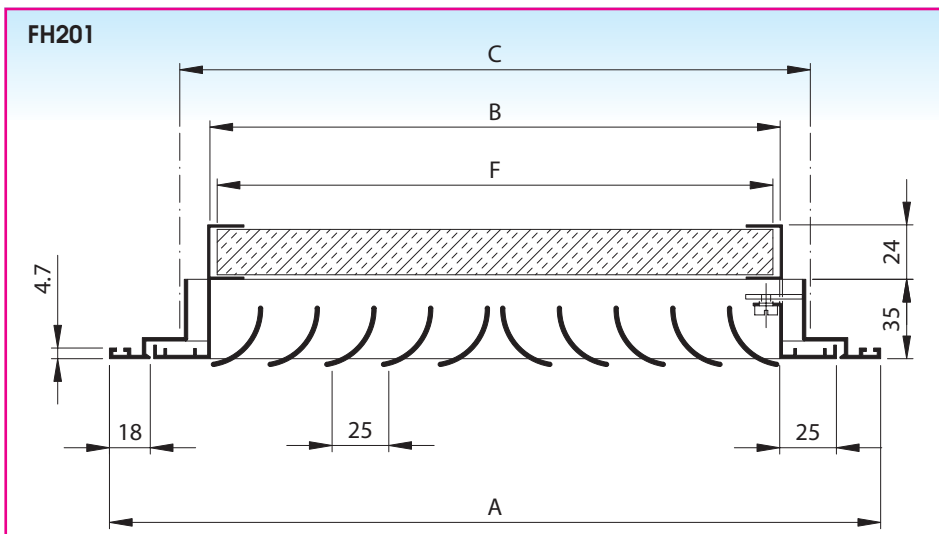
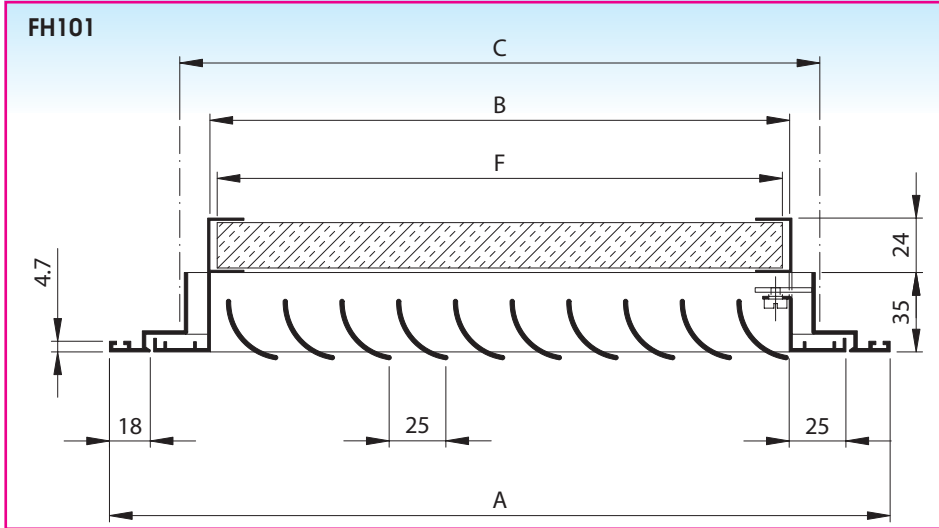


EXHAUST GRILLE WITH FILTER FRAME FH101/201/371/711/771/781

Installation dimensions



Application

The grille type FH101/201/371/711/771/781 is used for the exhaust of air in facilities such as offices, warehouses, work-shops, ... The grille can be used for wall or duct mounting in situations where the room lying behind or the duct has to be protected against pollution.

Technical information

Characteristics :

FH101 :

- adjustable curved vanes, 1 direction
- free passage ca. 60%
- the grille is hinged to the filter frame which is able to receive all 25 mm thick filter cartridges

FH201 :

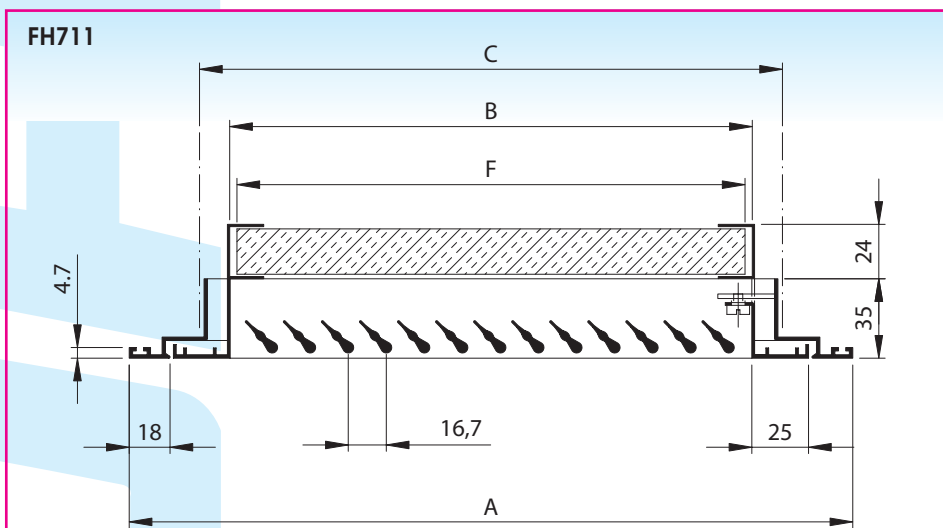
- adjustable curved vanes, 2 directions
- free passage ca. 60%
- the grille is hinged to the filter frame which is able to receive all 25 mm thick filter cartridges

FH371 :

- perforated plate
- free passage ca. 50%
- the grille is hinged to the filter frame which is able to receive all 25 mm thick filter cartridges

FH711 :

- fixed horizontal vanes
- free passage ca. 60%
- the grille is hinged to the filter frame which is able to receive all 25 mm thick filter cartridges

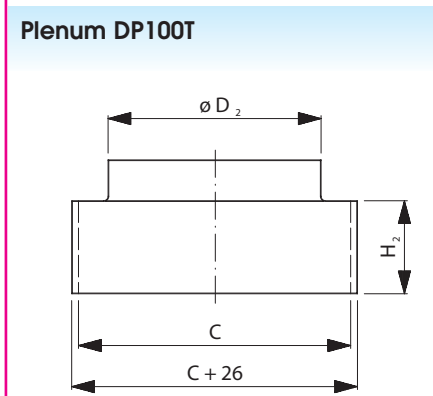
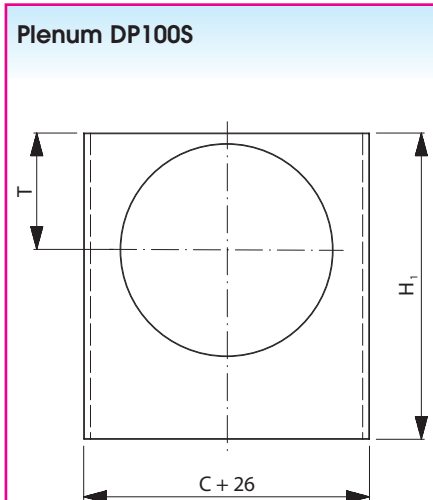
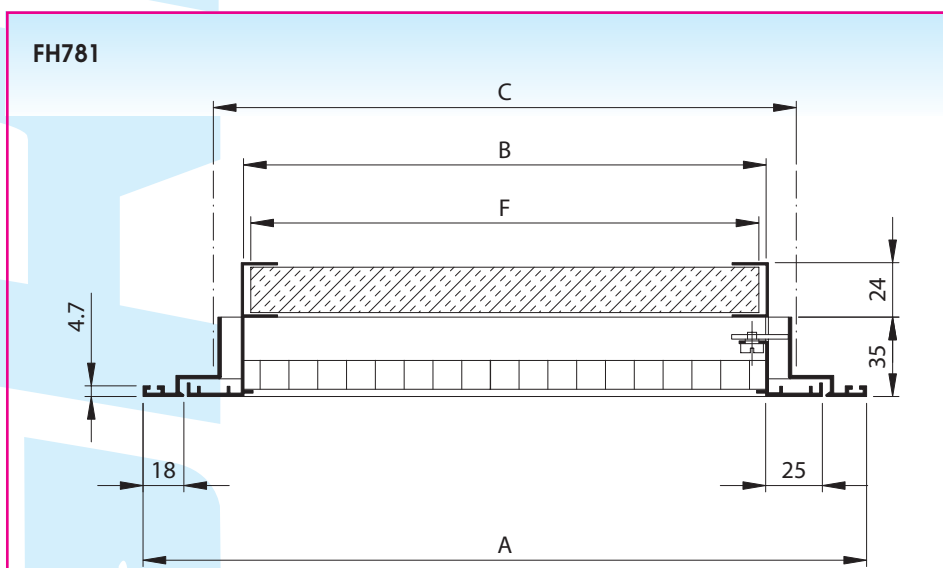
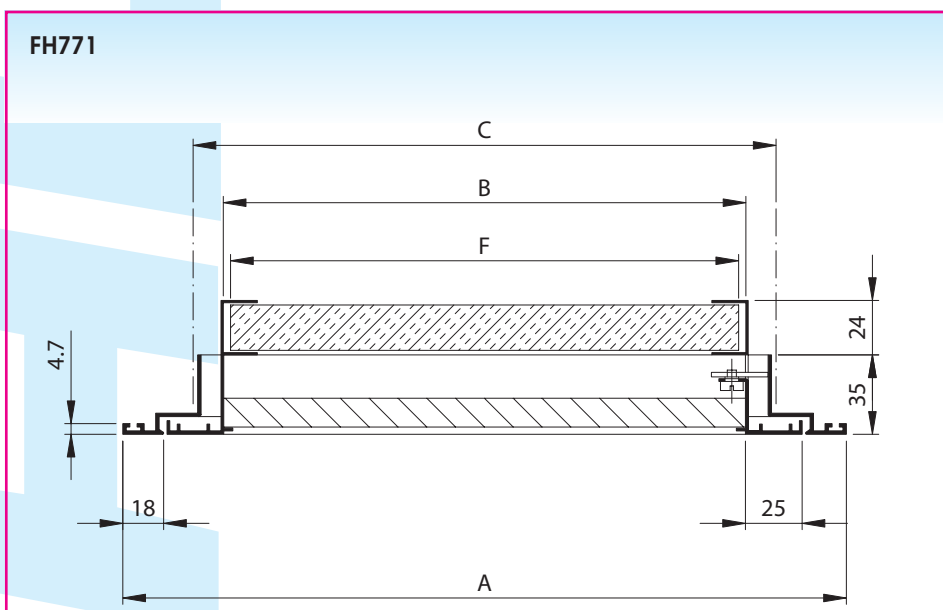


FH771 :

- grid core with links of 45° deflection, 12,5 x 12,5 mm
- free passage ca. 85%
- the grille is hinged to the filter frame which is able to receive all 25 mm thick filter cartridges

FH781 :

- grid core with straight links 12,5 x 12,5 mm
- free passage ca. 85%
- the grille is hinged to the filter frame which is able to receive all 25 mm thick filter cartridges



Nom. Dim.	A	B	C	Filter
594 x 294	594 x 294	505 x 205	535 x 235	500 x 200
594 x 594	594 x 594	505 x 505	535 x 535	500 x 500
669 x 669	669 x 669	580 x 580	610 x 610	575 x 575

Specifications description

Example :

Aluminium exhaust grille with fixed filter frame and grid core. The grille is standard painted white (RAL9010).

Type : FH781

nom. dim. (LxH) ... x ... mm

Accessories

- A filter cartridge DUST STOP 25 mm thick can be delivered on request. (the grille is standard without filter cartridge).

Fixing

concealed screw fixing in filter frame

How to order

FH771, dimensions 594 x 594 mm with filter cartridge, painted white (RAL9010).

a) Grille

F	H	7	7	1	-	-	0	5	9	4	0	5	9	4
							L				H			

- 101 : with curved vanes, 1 direction
- 201 : with curved vanes, 2 directions
- 371 : with perforated steel plate
- 711 : with fixed horizontal vanes
- 771 : with grid core (links 45° deflection, 12,5 x 12,5 mm)
- 781 : with grid core (straight links 12,5 x 12,5 mm)

H : grille with fixed filterframe and concealed screw fixing

b) Filter Cartridge

F	I	3	2	5	-	-	0	5	0	0	0	5	0	0
							L				H			

- FI225: class G2
- FI325: class G3
- FI425: class G4

Possible deliveries

- **FH101** : aluminium grille with filter cartridge and curved vanes, 1 direction, painted RAL9010
- **FH201** : aluminium grille with filter cartridge and curved vanes, 2 directions, painted RAL9010
- **FH371** : aluminium grille with filter cartridge and perforated plate, painted RAL9010
- **FH711** : aluminium grille with filter cartridge and fixed horizontal vanes, painted RAL9010
- **FH771** : aluminium grille with grid core and links of 12,5 x 12,5 mm, 45° deflection, painted RAL9010
- **FH781** : aluminium grille with grid core and straight links of 12,5 x 12,5 mm, painted RAL9010

