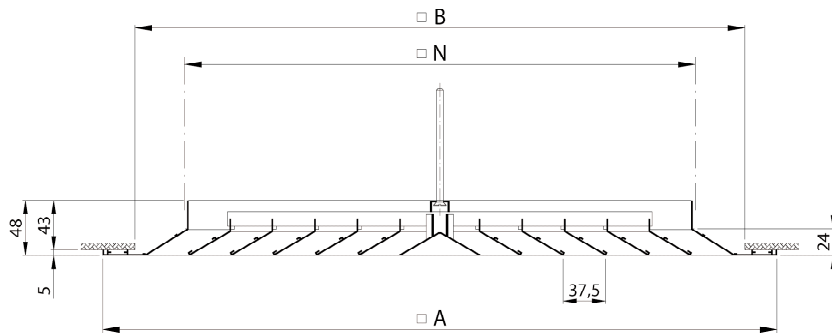


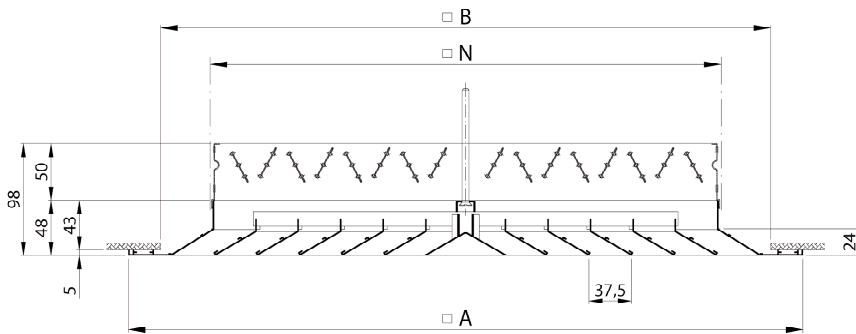
## MULTIDIRECTIONAL DIFFUSER EG400 • EH400

### Installation dimensions

EG400 / EH400

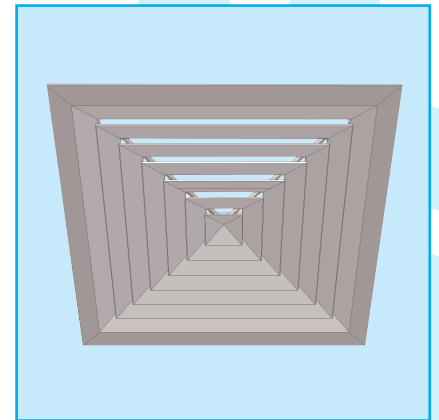


EG400 / EH400 + DT008 + GR002



Size	□A	□B	□N
150	294	225	150
225	369	300	225
300	444	375	300
375	519	450	375
450	594	525	450

All dimensions in mm.  
□B: min. ceiling opening



### Application

The diffuser type EG400/EH400 is used for the supply and exhaust of cooled or heated air in facilities such as offices, shopping centres, conference rooms, ...

The diffuser can be mounted in the ceiling and has a fixed 4-way horizontal air pattern.

### Technical information

#### Characteristics :

- Square diffuser with fixed 4-way horizontal air pattern
- Available in multiples of 75mm from 150 up to 450 mm.
- Removable core, standard provided with a safety cord
- Fixing with blade damper possible
- Mounting on a false ceiling plate is possible
- Plenum: DP100 (see 8 010)

#### Construction:

- Completely in extruded aluminium, painted white (RAL9010)

## Specifications description

### Example:

Square aluminium diffuser for central screw fixing (invisible screw) with removable core.

The inner rings (4-way) are all in one surface.

The diffuser is painted white (RAL9010) and complete with damper.

### Type: EG408

size (NxN): ...x... mm

## Accessories

- **DT008:** Opposed blade damper for EG400/EH400. Construction out of galvanised sheet steel, painted black. Operated by a key through the diffuser core.
- **GR002:** Steel mounting support for EG400/EH400

## Fixing

- **EG400 :** the diffuser is mounted with an invisible central screw (delivered), with mounting support GR002 (to order separately) and can also be used for lay on T-bars. The central screw fixing is at the back of the central core.
- **EH400:** same as EG400 mounting, but also possible with 4 visible screws in the margin

## How to order

### a) Diffuser

EH400 size 225 x 225 mm without damper.

E	H	4	0	0	-	-	0	2	2	5	0	2	2	5
							N				N			

- : without false ceiling plate

0 : without damper  
8 : with damper (DT008)

G : invisible central screw fixing and removable core  
H : execution G + screws in the margin

### b) Diffuser mounted on a false ceiling plate

EG400 size 225 x 225 mm, without damper, mounted on a false ceiling plate size 594 x 594 mm.

E	G	4	0	0	P	-	0	2	2	5	0	5	9	4
---	---	---	---	---	---	---	---	---	---	---	---	---	---	---

Size diffuser    External dimensions of false ceiling plate

P : mounted on a false ceiling plate

0 : without damper  
8 : with damper (DT008)

G : invisible central screw fixing and removable core  
H : execution G + screws in the margin

### c) Mounting support

G	R	0	0	2	-	-	0	4	5	0	0	4	5	0
---	---	---	---	---	---	---	---	---	---	---	---	---	---	---

For EG400/EH400

Size

Size

**Note: plenum see DP100 (p. 8 010)**

## Possible deliveries

- **EG400:** removable core with invisible central screw fixing, without screws in the margin
- **EH400:** removable core with invisible central screw fixing, with screws in the margin
- **EG408/EH408:** EG400/EH400 with opposed blade damper
- **EG400P/EH400P:** EG400/EH400 mounted on a false ceiling plate, dimension to be specified