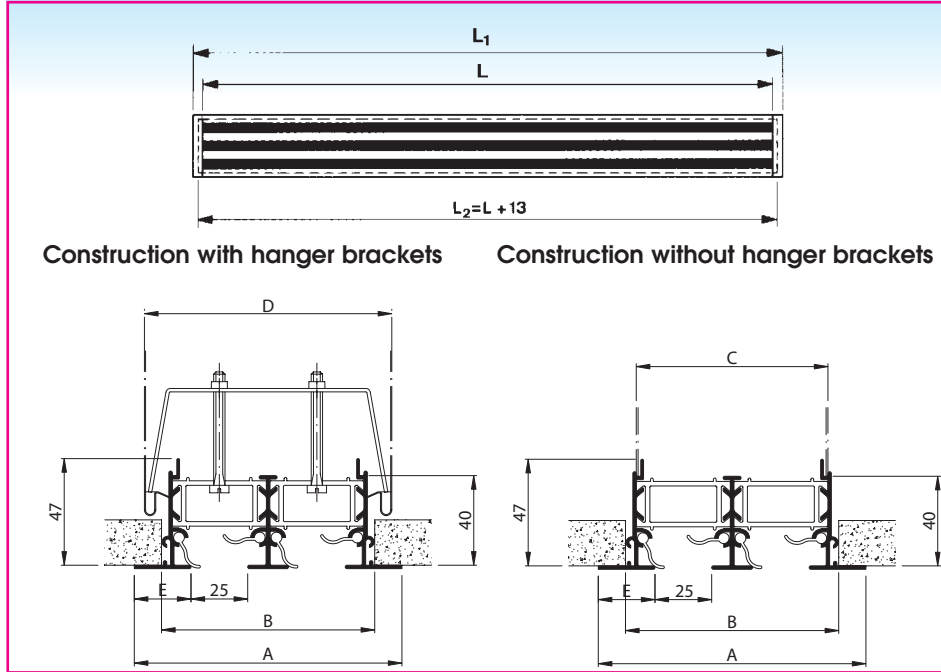


ADJUSTABLE SLOT DIFFUSER SE800

Installation dimensions



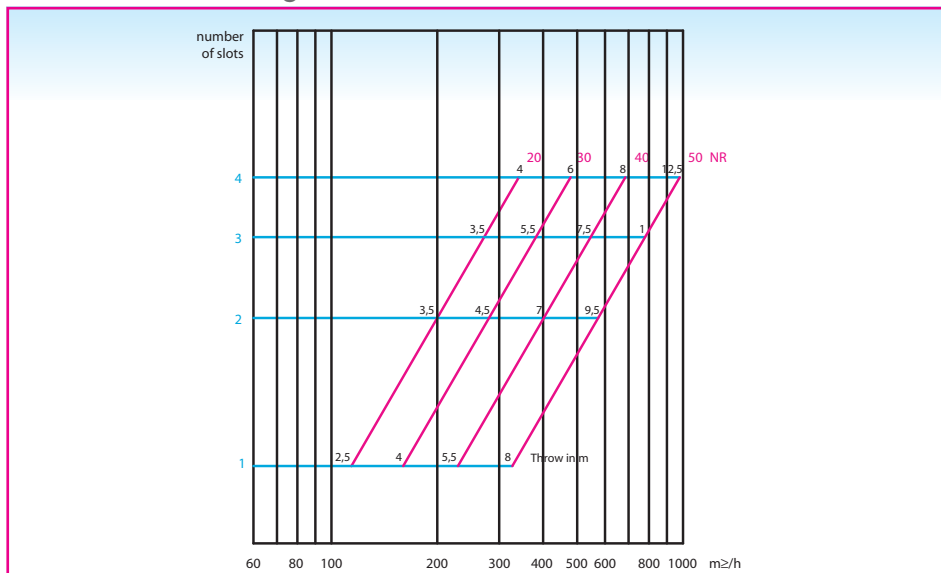
	Number of slots							
	1	2	3	4	5	6	7	8
A (SE)	75	118	161	204	247	290	333	376
B	54	97	140	183	226	269	312	355
C	41	84	127	170	213	256	299	342
D	64	107	150	193	236	279	322	365

L = slot length
L₂, B = minimum ceiling opening

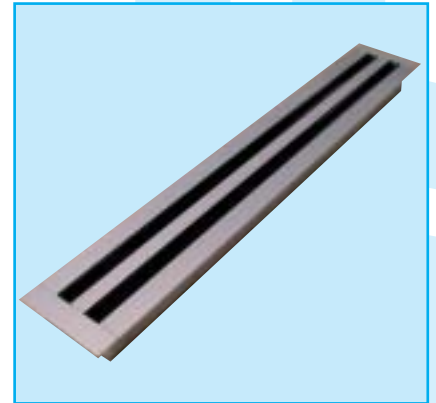
SE : L₁ = L + 50
E = 25

All dimensions in mm.

Fast selection diagram



Throw factor is based on a v_R of 0,17 m/s in the occupied zone.
See page 4 020 for a detailed selection



Application

The slot diffuser, type SE800 is used for the supply of cooled and heated air in facilities such as offices, shops, meeting rooms, ...

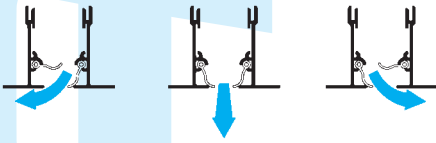
It is designed for installation in the ceiling or sidewall and is available from 1 to 8 slots. Each slot is individually adjustable and equipped with 2 deflector vanes of a special design to minimise the internal turbulences. Also one can obtain an ideal air supply pattern adjustable over 180°.

All lengths are available so that the diffuser fits ideally in every ceiling-system.

Technical information

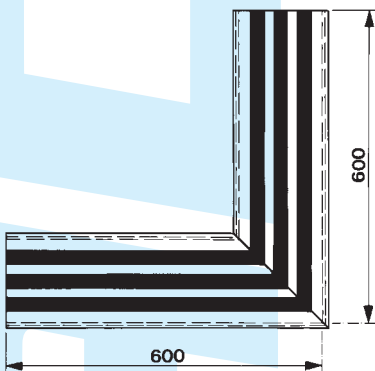
Characteristics

- available up to 8 slots
- all lengths available (in steps of 1 mm): from 300 mm up to 2000 mm in one piece; larger lengths with intermediate pieces (length = 1500 mm) and end pieces
- margin width of 25 mm
- none operational parts or dummy diffusers; slots are closed by black PVC strips (S-850)
- exhaust: without deflectors
- supply: horizontal or vertical air supply pattern possible by adjustable deflectors



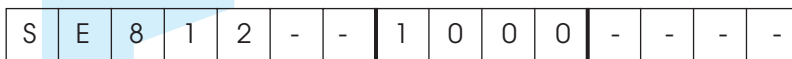
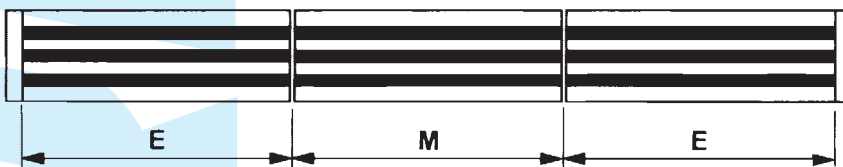
Adjusting possibilities :

- corner sections : for types S-800 and S-850 of slot diffusers appropriate corner sections in one piece are available in the dimensions as indicated. No plenum available for corner sections. Standard construction with corner of 90°, fitting in a ceiling opening of 600 mm. O/all dimension = 614 mm



How to order

SE800 with 2 slots and black aluminium deflectors, slot length 1000 mm.



- slot length (mm)
- : slot diffuser in one piece with end caps on both sides
- E : end pieces, with one end cap
- M: intermediate piece, without end caps
- C: corner section 90° (600x600 mm)
- number of slots
- 0 : exhaust, no deflectors
- 1 : supply, with **black** aluminium deflectors
- 2 : supply, with **white** aluminium deflectors
- 5 : dummy diffuser
- E : margin width 25 mm

- available with plenum :
 - with or without damper in the inlet
 - up to a length of 1600 mm
 - supplied with one circular inlet spigot, over 1600 mm : two circular inlet spigots

Construction

- slot diffusers out of natural tone anodised aluminium, with deflectors in black extruded aluminium
- construction with deflectors in white extruded aluminium, diffuser standard satin anodised
- plenum out of galvanised sheet steel, with or without insulation

Specifications description

Example :

Aluminium linear diffuser with 2 supply slots and adjustable deflectors. Complete with fixed mounted plenum, insulated at the inside, with circular side inlet spigot and damper. Diffuser natural tone anodised, black aluminium deflectors.

Type : SE812 + SP832 G
L = ... mm

Accessories

BOBSE : blanking off baffle; made out of steelplate, painted in black (RAL9005)

Fixing

- concealed fixing
- either by a direct and fixed mounting of the diffuser on the plenum (mounting Grada on demand)
- or by mounting brackets so that the diffuser can be removed from the plenum
- provided with mounting eyes (ø 7mm), mounting straps available on demand