

Accessories

Contollers



Sensors



Mounting brackets



Water heating regulation



Switches



FINESSE

Recessed Air Curtain



We offer

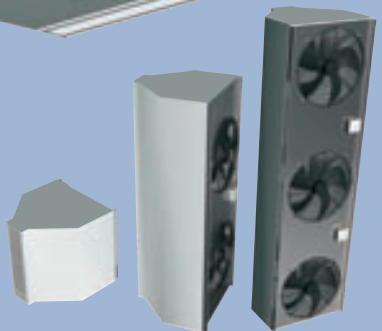
ECONOMIC-B



STANDESSE



VCP



- High air and heating output
- Automatic electronic regulation
- Compact grille that fits neatly in the false ceiling
- Suitable also for low ceilings
- Easy access for maintenance and service

All rights reserved. Issue 02/05.

Manufacturer

2VV, spol. s r.o., Poděbradská 289, 530 09 Pardubice, Czech Republic

tel +420 466 741 891
fax +420 466 741 899

e-mail 2vv@2vv.cz
web www.2vv.cz





Description

FINESSE air curtain represents a modern solution of an air curtain in the ceiling. It offers high air output, easy installation into any type of false ceiling and wide range of control options. Its high heating output reduces the need to use other heating sources. This air curtain fits into ceilings, where the emphasis is on aesthetics and easy installation. This is why it is used namely in banks, hotel lobbies, restaurants, administration buildings, presentation rooms and other representative spaces.

Mounting holes for hanging under ceiling

Easy access for connection to electronic board

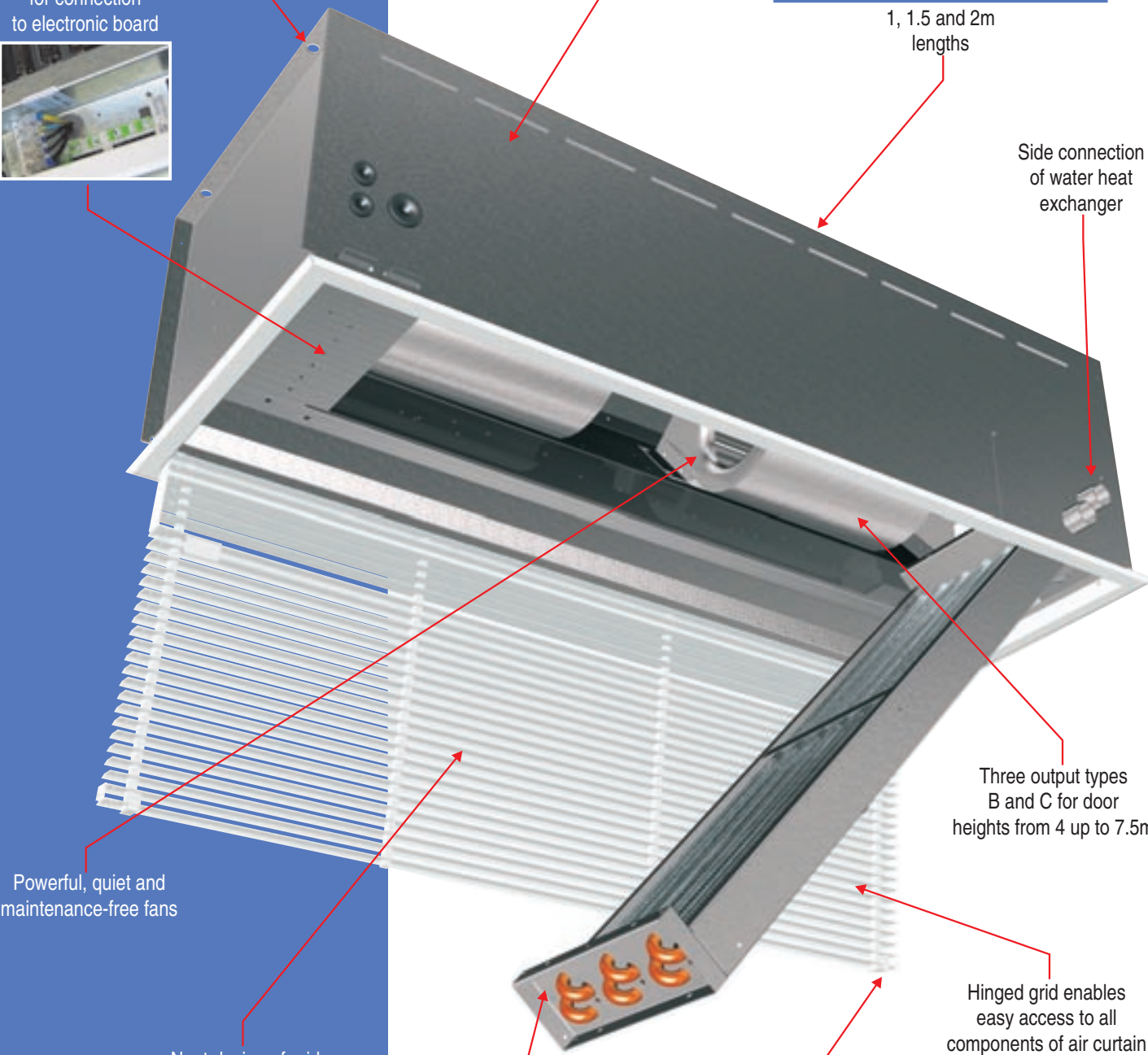


Low height also for low hanged ceilings



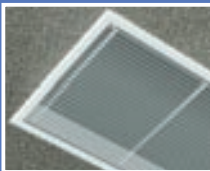
1, 1.5 and 2m lengths

Side connection of water heat exchanger



Powerful, quiet and maintenance-free fans

Neat design of grid



Hinged electric and water heat exchangers (must be connected by flexible hoses - see Accessories)

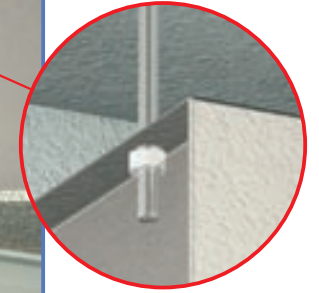
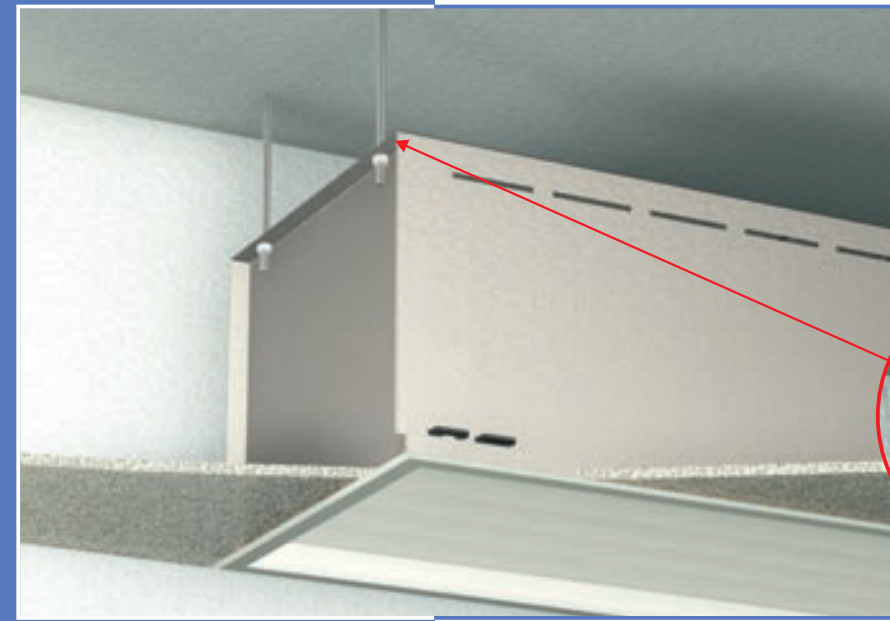
Simple and easy grille, without the need for its removal



Three output types B and C for door heights from 4 up to 7.5m

Hinged grid enables easy access to all components of air curtain

Example of installation into false ceiling

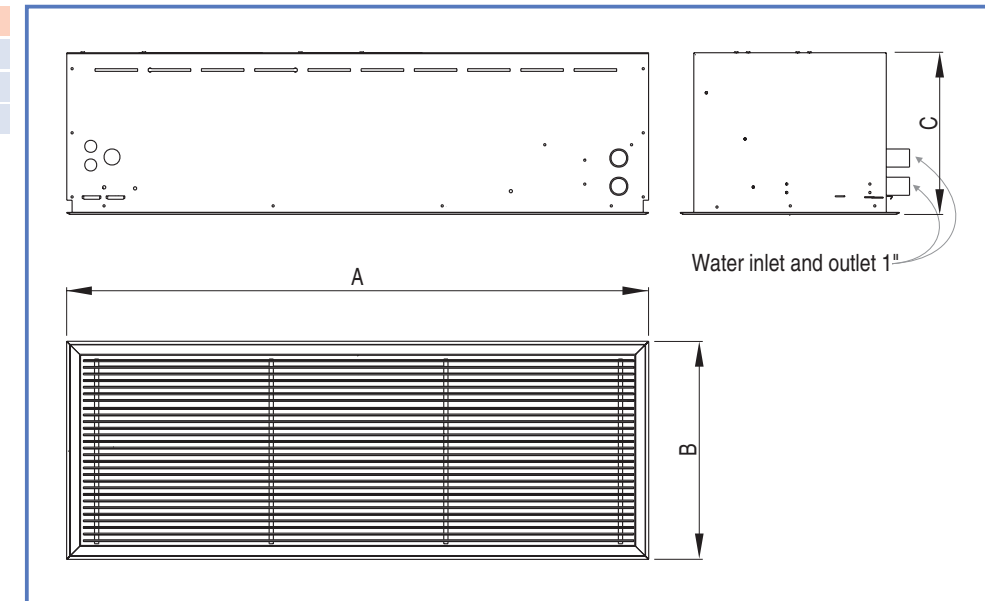


Detail of fixing to the threaded bars.

Dimensions

Type	A	B	C
VCS3-F-...-10..	1 100	410	304
VCS3-F-...-15..	1 500	410	304
VCS3-F-...-20..	2 000	410	304

All dimensions in millimeters.



Key code

VCS3 - F - B - 10 S - SM

- SM - standard power manual control
- DM - manual control with electronic regulation
- DA - manual/automatic control with electronic regulation
- S - no heater
- E - electric heater
- W - water heater
- 10, 15, 20 - air curtain length 1; 1.5 and 2 meters
- B, C - output type
- Air curtain into false ceiling - **FINESSE**



Control

The air curtain is offered with SM and complete electronic control (DM and DA) from the basic up to the fully electronic one with smart control. Control has been designed to cover majority of possible applications of this air curtain and to suit the requirements of both standard and demanding user.

Advantages of control

- + substantial power saving
- + optimal run mode round the year
- + user-friendly and well arranged
- + easy connection



* Just one from the list

	Three steps of air flow output	YES	YES	YES
	Two steps of heating output (electric heater type)	YES	YES	YES
	Door contact connection possibility	YES*	YES*	YES
	Room thermostat connection possibility	Switch the air curtain ON/OFF.	Switch the air curtain ON/OFF.	YES
	Timer connection possibility			YES
	Outdoor temperature sensor connection possibility	NO	NO	YES
	Filter clogging signal (presostat)	NO	NO	YES
	Electric heat exchanger overheating signal	NO	NO	YES
	Possibility to connect up to 6 air curtains	NO	YES	YES

Example of DA control with electric heater

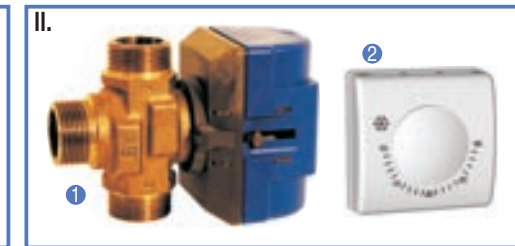


- 1 Outdoor temperature sensor
- 2 Door contact
- 3 Timer
- 4 Room temperature thermostat
- 5 DA controller

Advantages

- + possibility of fully automatic operation
- + use of all functions of the air curtain
- + maximum user's comfort
- + heat savings
- + switch ON/OFF according to time program

Example of DA control with water heater



I. Thermostatic valve with capillary (regulation by throttling)

- 1 Thermostatic valve
- 2 Capillary

- + effective temperature control
- + simple solution
- + easy installation
- + space savings



II. Three-way valve with remote control (ON/OFF mixing)

- 1 Three-way valve
- 2 Room temperature thermostat

- + easy temperature control on the room temperature thermostat
- + no load to pump in the system
- + space savings
- + quick assembly

III. Mixer SMU (regulation by mixing)

- 1 Mixer
- 2 Outdoor temperature sensor
- 3 Mixer controller
- 4 Door contact
- 5 Room temperature thermostat
- 6 DA controller

- + step-less temperature control
- + coverage of pressure loss in heat exchanger by own pump
- + comfort control
- + heat saving



Basic parameters

Type	Maximum door height (m)	Air flow (m³/h)	Heater output (kW)	Power supply (V/Hz)	Input (A)	Noise level** (dB(A))	Weight (kg)
VCS3-F-B-10S	4,0	2 240	-	230/50	2,0	54,8	21
VCS3-F-B-15S		3 360	-	230/50	3,0	58,9	34
VCS3-F-B-20S		4 480	-	230/50	4,0	60,5	48
VCS3-F-B-10E		2 220	9,0	400/50	15,0	54,8	25
VCS3-F-B-15E		3 330	13,5	400/50	22,5	58,9	37
VCS3-F-B-20E		4 440	18,0	400/50	30,0	60,5	51
VCS3-F-B-10W		2 150	25,2/20,6*	230/50	2,0	53,6	29
VCS3-F-B-15W		3 230	40,9/33,9*	230/50	3,0	57,4	43
VCS3-F-B-20W		4 300	54,5/45,2*	230/50	4,0	58,6	60
VCS3-F-C-10S		7,5	2 860	-	230/50	3,0	55,6
VCS3-F-C-15S	3 990		-	230/50	4,0	59,5	37
VCS3-F-C-20S	5 040		-	230/50	5,0	60,9	51
VCS3-F-C-10E	2 790		9,0	400/50	16,0	55,6	28
VCS3-F-C-15E	3 890		13,5	400/50	23,5	59,5	40
VCS3-F-C-20E	4 920		18,0	400/50	31,0	60,9	53
VCS3-F-C-10W	2 610		28,4/23,2*	230/50	3,0	54,7	32
VCS3-F-C-15W	3 640		44,1/36,5*	230/50	4,0	57,9	46
VCS3-F-C-20W	4 600		56,9/47,1*	230/50	5,0	58,9	63

*Values measured at inlet air temperature +18°C and temperature drop 90/70°C / 80/60°C.

**Acoustic noise level measured in distance 3m from the inlet side according to the standards EN-ISO 3743-1 and EN-ISO 3744. Above stated values are related to the maximum loads.

Parameters of electric heater

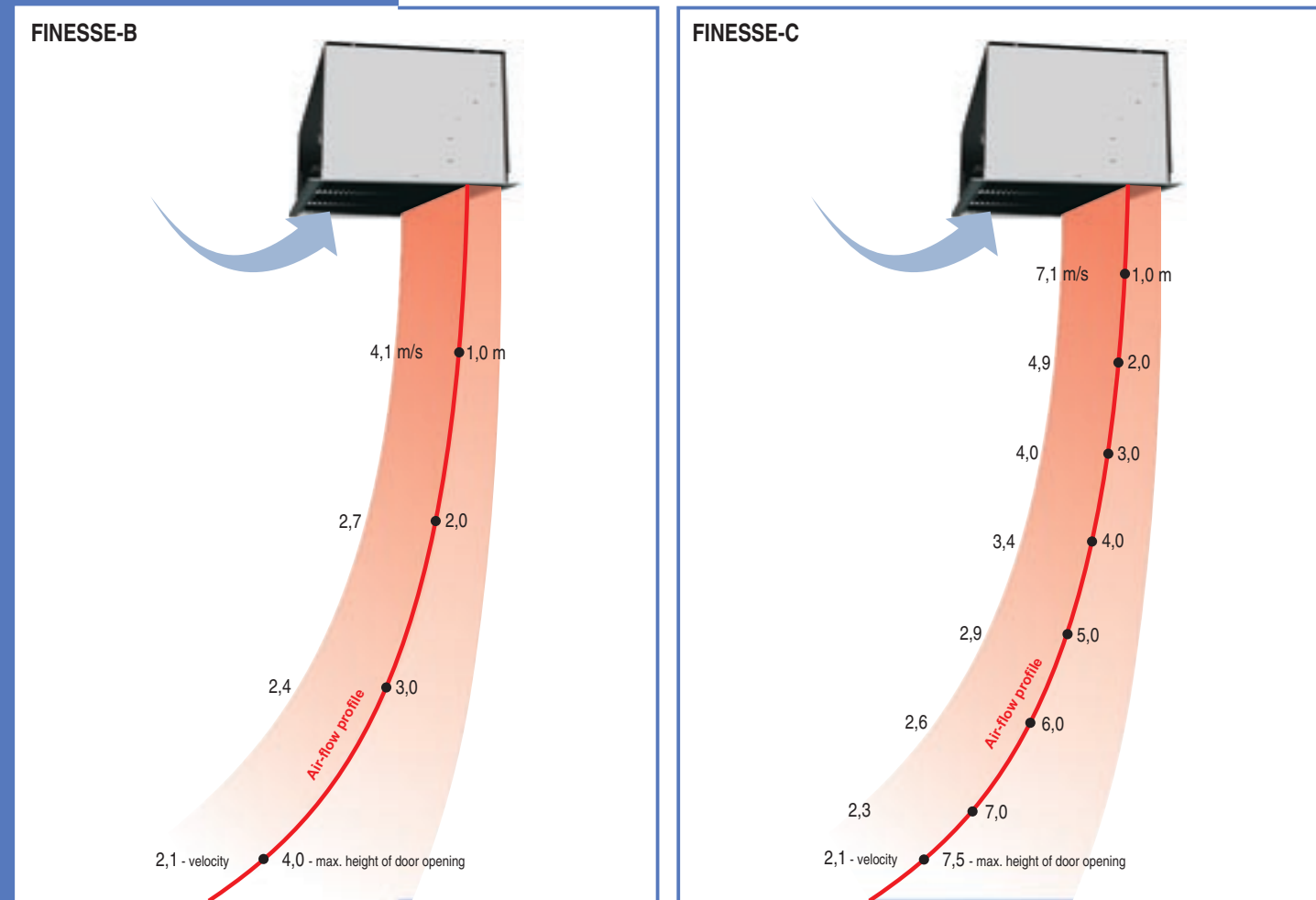
Type	Δ t (°C)	Current - 400V/50Hz (A)	Type	Δ t (°C)	Current - 400V/50Hz (A)
VCS3-F-B-10E	11,9	13,0	VCS3-F-C-10E	9,5	13,0
VCS3-F-B-15E	11,9	19,5	VCS3-F-C-15E	10,2	19,5
VCS3-F-B-20E	11,9	26	VCS3-F-C-20E	10,8	26

Parameters of water heater

Type	Δ t (°C)	Water flow rate (l/s)	Water pressure loss (kPa)	Δ t (°C)	Water flow rate (l/s)	Water pressure loss (kPa)
VCS3-F-B-10W	27,6	0,24	1,71	33,8	0,30	2,37
VCS3-F-B-15W	29,9	0,40	5,67	36,2	0,48	7,71
VCS3-F-B-20W	31,0	0,53	9,42	37,4	0,65	12,83
VCS3-F-C-10W	25,6	0,27	2,11	31,3	0,33	2,94
VCS3-F-C-15W	28,6	0,43	6,48	34,6	0,52	8,83
VCS3-F-C-20W	30,2	0,56	10,18	36,5	0,68	13,86

Temperature drop ■ 80/60°C ■ 90/70°C

Air parameters



Heating output

