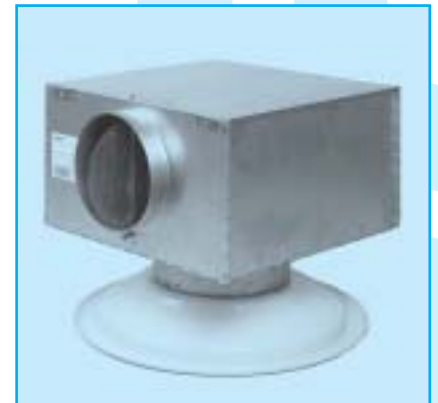
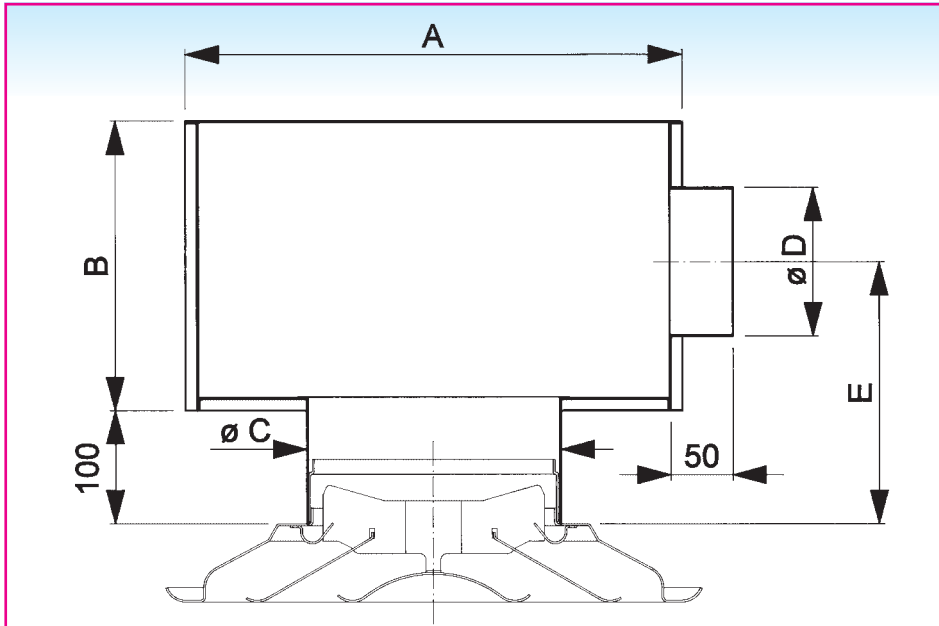


# PLENUM BOX FOR CIRCULAR CEILING DIFFUSER (DE100/CE100) DP150S

## Installation dimensions



## Application

The plenum DP150S with or without damper in the inlet spigot is used for mounting on diffuser CE100/DE100. The plenum is available with or without insulation.

Size	A	B	Ø C	Ø D	E
160	349	185	160	123	200
200	399	220	200	158	218
250	474	260	250	198	238
315	524	310	315	248	263
355	524	310	355	248	263
400	624	375	400	313	296
450	724	415	450	353	316
500	824	460	500	398	338
630	1024	560	630	498	388

All dimensions in mm.

## Technical information

### Characteristics

- circular side entry
- perforated damper possible in the inlet spigot
- plenum can be internally insulated

### Construction

- provided with mounting eyes (Ø 7mm), mounting straps available on demand, galvanised sheet steel

## Specifications description

### Example :

Insulated plenum box for diffuser CE100/DE100 with side entry supplied with damper.  
Made out of galvanised sheet steel.

**Type : DP151SG**  
Size ... mm

## How to order

DP150 with side entry and damper, insulated, for DE100 size 250 mm.

D	P	1	5	1	S	G	0	2	5	0	0	0	0
---	---	---	---	---	---	---	---	---	---	---	---	---	---

- size ceiling diffuser
- : non insulated plenum
- G: internally insulated plenum
- S : side entry
- 0 : without damper
- 1 : with damper in inlet spigot
- 5 : plenum for CE100/DE100

## Possible deliveries

- **DP150S** : plenum with side entry
- **DP151S** : DP150S with damper
- **DP150SG** : insulated plenum with side entry
- **DP151SG** : DP150SG with damper