

CONNECTDEC™ Type Compacdec®

CONNECTDEC™ type Compacdec® is a superb flexible duct constructed out of **heavy multiple layered corrugated aluminium**. By the inter lockseam a high airtightness and flexibility is reached. The duct is standard fitted with metal sleeves at both ends to fit to any rigid ductwork or appliance instantly.

Choice between: (Fit according to EN1506)

Type 1) Male - Male

Type 2) Male - Female

Type 3) Female – Female



Article code: CO(1, 2 or 3)CD{Ø}/Length

e.g. CO3CD100/1.0 (type 3 Ø100mm)

- Handy connection between ventilation unit and ducting.
- Fire resistant according to the German norm **DIN4102** and to the European norm **EN13501-1** and Classified as **A1**.
- Mechanical manufactured according **NEN-EN13180**.

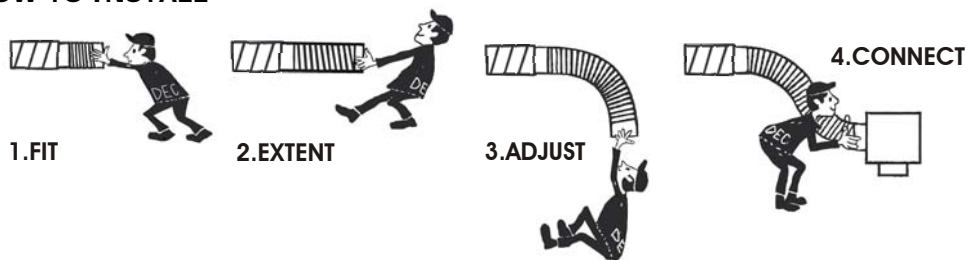


Applications in practice

- **THE Solution to over bridge inaccuracy in measurements**
- **Saves installation time and material**
- To be combined immediately with our air valves (e.g. DAV or DVSC)
- Mechanical air supply systems
- Air conditioning systems
- Systems, where vapors should be exhausted
- Above mentioned systems, where a special mechanical strength is required



HOW TO INSTALL



Restrictions in the range of application

The **CONNECTDEC™ type Compacdec®** is not suitable for transporting air with a high concentration of acid and base.

PLEASE NOTICE:

The consultant is responsible for the actual installation and mounting of the product.

The mentioned values with respect to temperatures are not appropriate to be used to determine the physical properties. These properties are also dependent on humidity and the temperature of the air inside and outside of the H.V.A.C. system.

The information contained in this brochure was current on the publication date. The Company reserves the right to make changes in details at any time without prior notice. In order to avoid misunderstandings, any interested party is advised to contact the Company checking for any changes in materials and/or information after this brochure was published.

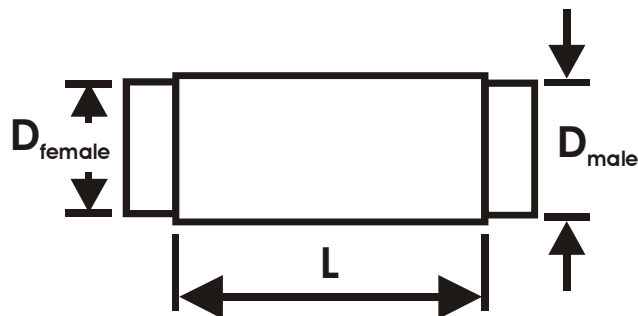
Version 2010 www.decinternational.com

CONNECTDEC™ Type Compacdec®

	CONNECTDEC™
Mechanical properties	COMPACDEC®
Temperature range (°C)	-30 - +250
Peak. value (°C)	+400
Max. operating pressure (Pa)	+3000
Max. air velocity (m/s)	30
Diameter range (mm)	080 - 315
Fire classes according to	COMPACDEC®
Europe (EN13501-1)	A1
The Netherlands (NEN6065/6066)	1
Germany (DIN 4102)	A1
France (CSTB)	M0
Switzerland (BKZ)	6Q3
United Kingdom (BS 476)	4, 6, 7 and 20
Austria (B3800)	A1
Sweden (Swedcert)	A15
Italy (CSI)	0
Technical Data	COMPACDEC®
Material Construction	2 Layers aluminium
Minimum bending radius	1 x Ø
Standard length (meters)	0.5 – 1.0 – 1.5
Standard Color	Aluminium
Connecting Sleeves	Galvanized steel

EN-1506			
D _{nom} (mm)	D _{female} (mm)	D _{male} (mm)	Tol.
080	80.5	79.3	+0 ; -0.5
100	100.5	99.3	+0 ; -0.5
125	125.5	124.3	+0 ; -0.5
150	150.6	149.3	+0 ; -0.6
160	160.6	159.3	+0 ; -0.6
200	200.7	199.3	+0 ; -0.7
250	250.8	149.3	+0 ; -0.8
315	315.9	314.3	+0 ; -0.9

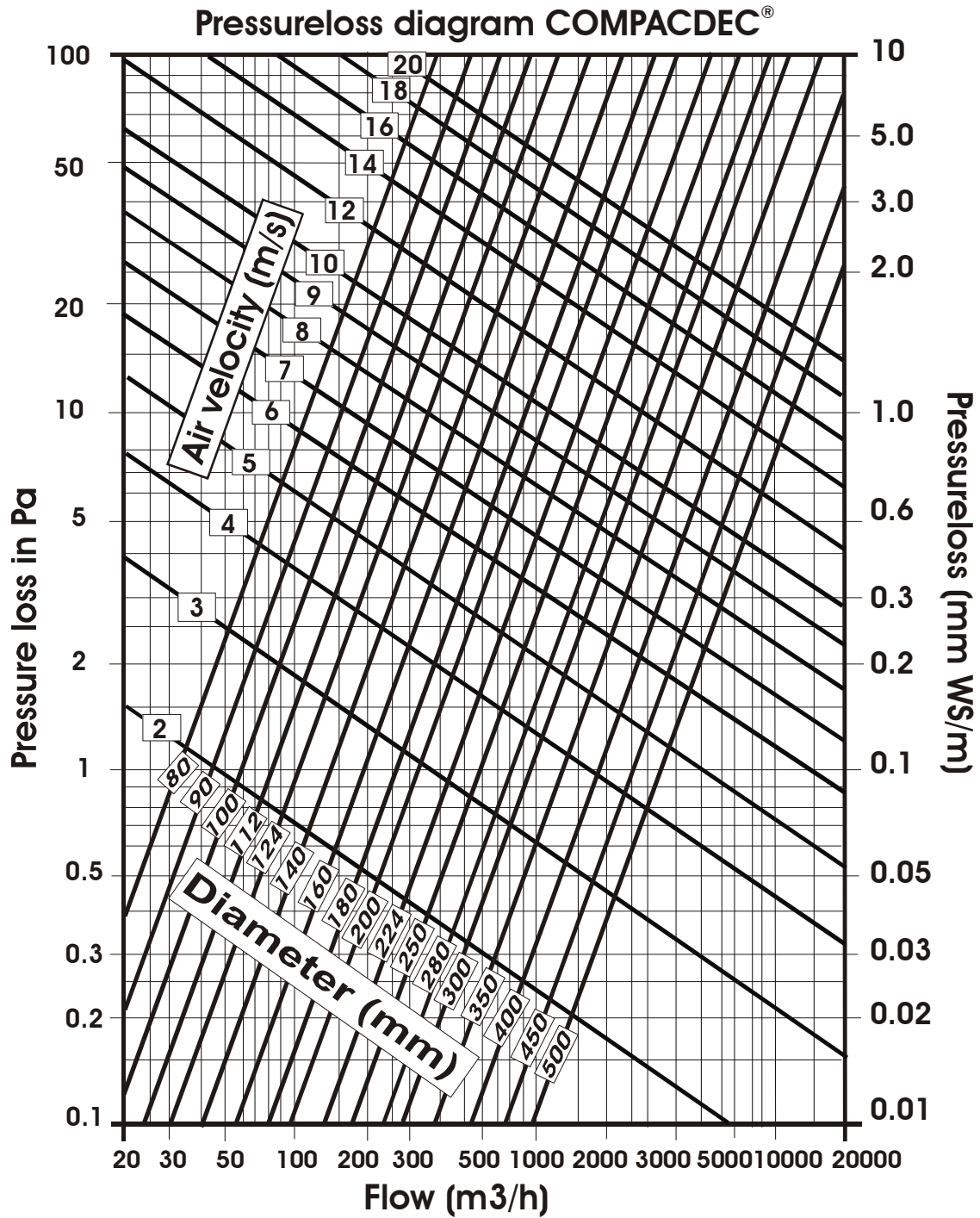
1.9b



The information contained in this brochure was current on the publication date. The Company reserves the right to make changes in details at any time without prior notice. In order to avoid misunderstandings, any interested party is advised to contact the Company checking for any changes in materials and/or information after this brochure was published.

Version 2010 www.decinternational.com

CONNECTDEC™ Type Compacdec®



1.9b

The information contained in this brochure was current on the publication date. The Company reserves the right to make changes in details at any time without prior notice. In order to avoid misunderstandings, any interested party is advised to contact the Company checking for any changes in materials and/or information after this brochure was published.
Version 2010 www.decinternational.com