

Flexit S3 R

Art.no.	Type
14010	S3 REL
14011	S3 RER



CI 50 Control Panel included in all units
(with 12 m cable).

	S3 R
Rated voltage:	230V/50Hz
Fuse:	10A
Rated current, total:	5,5A
Rated power, total:	1271W
Rated power, electric battery:	900W
Rated power, fans:	2 x 165W
Rated preheating power:	-
Fan type:	F-wheel
Fan motor control:	Transformer
Max. fan speed:	2230rpm
Automatic, standard:	CS 50
Filter type (SUP/EXTR):	F7/F7
Filter dimensions SUP (WxHxD):	285x130x50mm
Filter dimensions EXTR (WxHxD):	285x130x50mm
Weight:	38,5 kg (without kitchen hood)
Duct connection:	Ø125mm (127mm female)
Height:	700mm (without kitchen hood)
Width:	598mm
Depth:	320mm

Flexit S3 R

Accessories



Filter Set
Art.no.
12328



CI 50 Control Panel
Art.no.
09380



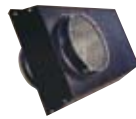
CI 50 Additional box
for for surface mounting
Art.no. Type
09381 silver
09382 white



CI 500 Control Panel
Art.no.
09385



SP 450 Motion Detector
Art.no.
09390



Combi. Unit
Art.no. Type
00801 2xØ125mm, white
00802 2xØ125mm, black
00797 2xØ160mm, black
00798 2xØ160mm, white

For external installation with S3 R mod.:



Brasserie-E, white
Art.no. 13750



Brasserie-E, steel
Art.no. 13751



Fondue-E
Art.no. 13616



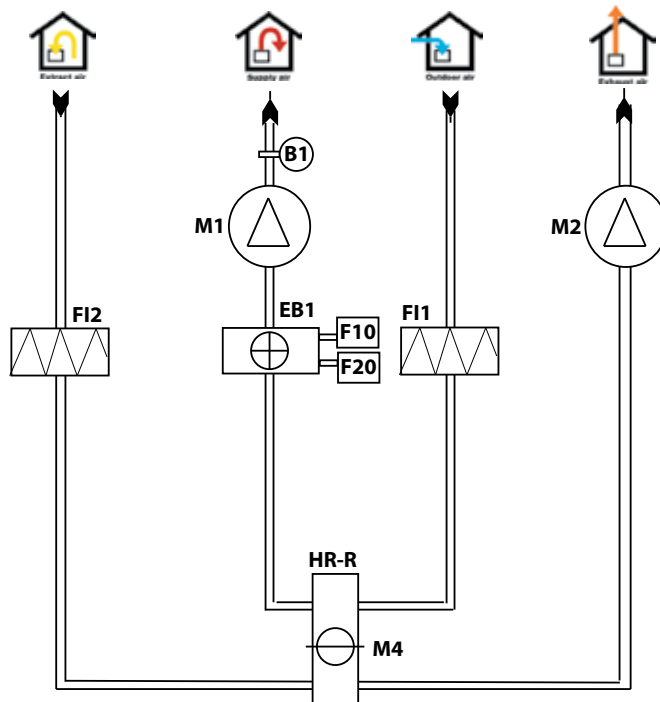
Bistro-E
Art.no. 13626



Frontlist, steel
Art.no. 13663

Flexit S3 R

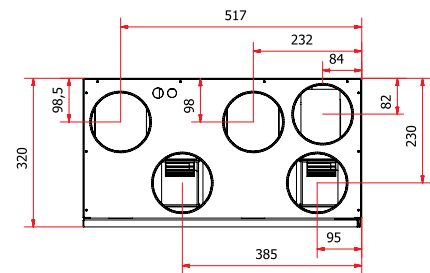
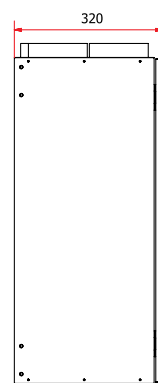
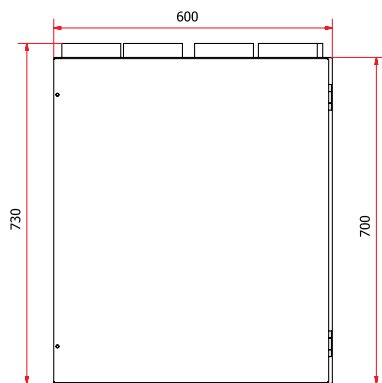
System Drawing



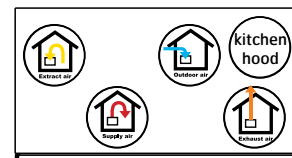
- B1 Supply air temperature sensor
- EB1 Water heating battery
- F10 Overheating thermostat, manual reset
- F20 Overheating thermostat, automatisk reset
- F11 Supply air filter
- F12 Extract air filter
- M1 Supply Airfan
- M2 Extract air fan
- HR-R Rotating heat exchanger
- M4 Rotor motor

Dimensioned Drawing (right model)

Dimensions in mm

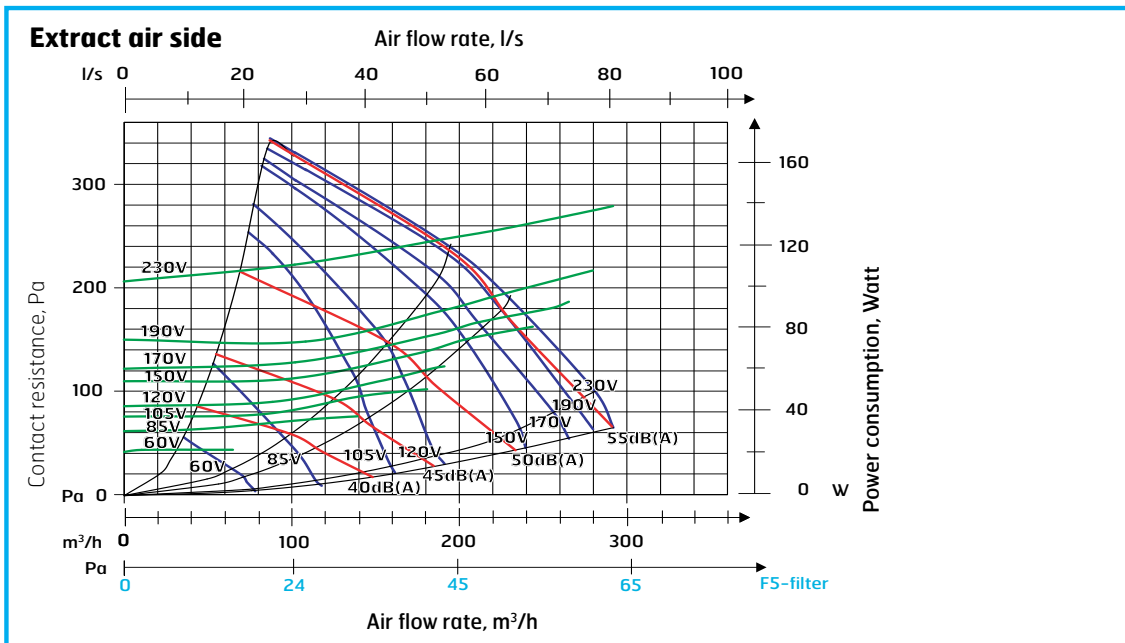
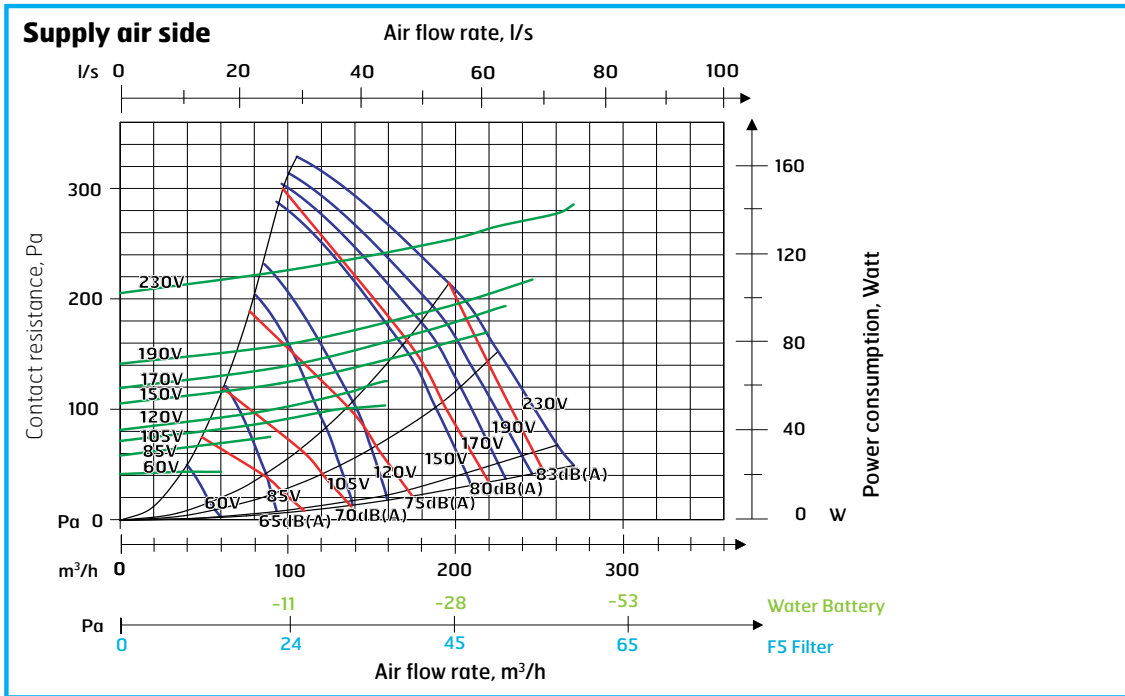


Duct connection (right model)



Flexit S3 R

Capacity Diagram S3 R (measured with F7 filter)



Sound data is given at sound power level LwA in the capacity diagrams and is corrected with the table below for the various octave bands. Radiated noise produces Lw in the various octave bands and total LwA. Radiated noise is calculated by taking the noise value from the supply air table and deducting the total value from the correction factor table.

Correction factor for Lw									
Hz	63	125	250	500	1000	2000	4000	8000	Total LwA
Supply air	3	2	-2	-5	-5	-6	-13	-29	
Extract air	18	14	1	-12	-14	-28	-37	-43	
Radiated	-47	-42	-40	-43	-44	-45	-49	-57	-38,7

Supply air data is measured in accordance with ISO 5136, the induct method. Radiated noise is measured in accordance with ISO 9614-2. Bruel & Kjaer measuring equipment, type 2260.

- Blue curves:** Air capacity at various capacity settings in Volt.
- Green curves:** Supply air fan power consumption at various capacity settings.
- Red curves:** Sound power level LwA, cf. correction table.
- Light blue correction axis:** Pressure increase using an EU-5 filter.
- Light green correction axis:** Pressure increase using water battery.